

TOOL HOLDERS

ACCESSORY

ACCESSORY 附件

Morse Taper ER Collet Chuck.....	G.04
莫氏柄ER刀柄.....	211
Morse Taper OZ Collet Chuck.....	C.06
莫氏柄OZ刀柄	213
Morse Taper Face Mill Holder	G.07
莫氏柄面铣刀柄.....	007
Morse Taper Combi Shell Mill Holder	G.08
莫氏柄混合插入式铣刀柄	008
Morse Taper Tapping Chuck	G.09
莫氏柄攻丝刀柄	009
ER Collet Chuck with Mini Nut.....	G.10
ER 弹簧夹头刀柄	010
Straight Shank Tapping Chuck	G.13
弹性快换攻丝刀柄.....	013
ER Collet	G.14
ER 筒夹	014
ER Collet Set	G.15
ER 筒夹套装	015
ER Sealed Collet	G.16
ER 止水筒夹.....	016
Straight Shank Collet	G.17
SC 直柄筒夹	017
OZ Collet	G.18
OZ 筒夹	018
SKS Collet.....	G.20
SKS 筒夹.....	020
Tapping Collet.....	G.22
攻丝筒夹.....	022
BT Pull Stud.....	G.30
BT 拉钉.....	030
SK Pull Stud	G.31
SK 拉钉	031
ISO 7388 Pull Stud	G.32
ISO 7388拉钉	032
CAT Pull Stud	G.33
CAT 拉钉	033
OTT Pull Stud	G.34
OTT 拉钉	034
ISO Pull Stud	G.35
ISO 拉钉	035
Mazak Pull Stud	G.36
马扎克拉钉	036



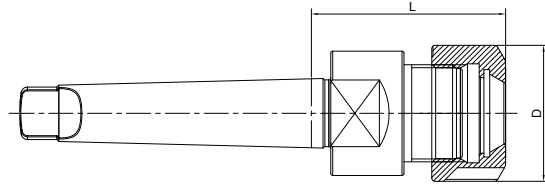
ACCESSORY 附件

ER Nut	G.37
ER 压帽	037
ER Sealed Nut	G.39
ER 止水压帽	039
OZ Nut	G.40
OZ 压帽	040
SKS Nut	G.41
SKS 压帽	041
ER Spanner	G.42
ER 扳手	042
Hook Spanner	G.44
勾头扳手	044
Ball Spanner	G.45
滚珠扳手	045
Boring Bar Sleeve	G.46
车床刀套(公制)	046
B Bushing	G.48
车床刀套B型	048
J Bushing	G.49
车床刀套J型	049
C Bushing	G.50
车床刀套C型	050
CV Bushing	G.51
车床刀套CV型	051
DD Bushing	G.52
车床刀套DD型	052
Z Bushing	G.53
车床刀套Z型	053
Locking Device.....	G.54
锁刀座	054
HSK Coolant Tube	G.56
HSK 冷却导管	056
Clutch Drive Ring.....	G.57
驱动环	057
Retaining Screw.....	G.58
压紧螺栓	058
Clamping Kit	G.60
组合压板	060
Balluff Data Carrier.....	G.61
巴鲁夫数据芯片	061
Tool Holder Trolley	G.62
刀具车	062



ER Collet Chuck DIN6499

ER 弹簧夹头刀柄

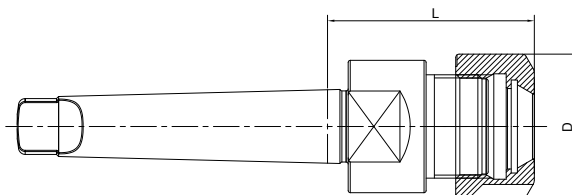


Size	D	L	Capacity
MTA2-ER16M-50	22	50	1-10
MTA2-ER20M-50	28	50	1-13
MTA2-ER25-60	42	60	2-16
MTA2-ER32-60	50	60	2-20
MTA3-ER16M-60	22	60	1-10
MTA3-ER20M-60	28	60	1-13
MTA3-ER25-60	42	60	2-16
MTA3-ER32-70	50	70	2-20
MTA3-ER40-80	63	80	3-26
MTA4-ER25-60	42	60	2-16
MTA4-ER32-70	50	70	2-20
MTA4-ER40-80	63	80	3-26
MTA5-ER40-80	63	80	3-26



ER Collet Chuck DIN6499

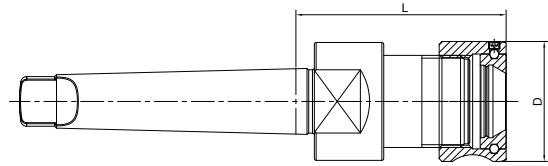
ER 弹簧夹头刀柄



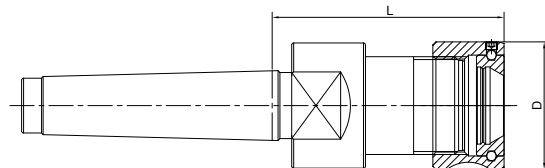
Size	D	L	Capacity
MTB1-ER11A-30	19	30	1-7
MTB1-ER16A-40	28	40	1-10
MTB2-ER16M-50	22	50	1-10
MTB2-ER20M-50	28	50	1-13
MTB2-ER11A-30	19	30	1-7
MTB2-ER16A-50	28	50	1-10
MTB2-ER20A-50	34	50	1-13
MTB2-ER25-47	42	47	2-16
MTB2-ER32-75	50	75	2-20
MTB2-ER40-80	63	80	3-26
MTB3-ER16M-60	22	60	1-10
MTB3-ER20M-50	28	50	1-13
MTB3-ER16A-50	28	50	1-10
MTB3-ER20A-50	36	50	1-13
MTB3-ER25-56	42	56	2-16
MTB3-ER32-60	50	60	2-20
MTB3-ER40-80	63	80	3-26
MTB4-ER25-60	42	60	2-16
MTB4-ER32-60	50	60	2-20
MTB4-ER40-80	63	80	3-26
MTB4-ER50-80	78	80	6-34
MTB5-ER40-80	63	80	3-26
MTB5-ER50-80	78	80	6-34

OZ Collet Chuck DIN6391

OZ 夹头刀柄

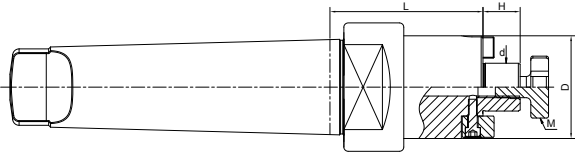


Size	D	L	Capacity
MTA2-OZ25-70	60	70	3-25
MTA3-OZ25-70	60	70	3-25
MTA4-OZ25-70	60	70	3-25

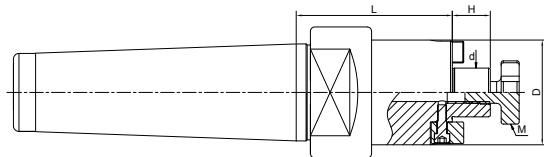


Size	D	L	Capacity
MTB2-OZ25-70	60	70	3-25
MTB3-OZ25-70	60	70	3-25
MTB4-OZ25-70	60	70	3-25
MTB4-OZ32-80	72	80	6-32
MTB5-OZ25-75	60	75	3-25
MTB5-OZ32-80	72	80	6-32

Face Mill Holder DIN6357
面铣刀柄



Size	d	D	L	H	M
MTA2-FMB16-30	16	38	30	17	M8
MTA2-FMB22-30	22	48	30	19	M10
MTA2-FMB27-30	27	58	30	21	M12
MTA3-FMB16-30	16	38	30	17	M8
MTA3-FMB22-30	22	48	30	19	M10
MTA3-FMB27-30	27	58	30	21	M12
MTA3-FMB32-30	32	78	30	24	M16
MTA4-FMB16-32	16	38	32	17	M8
MTA4-FMB22-32	22	48	32	19	M10
MTA4-FMB27-32	27	58	32	21	M12
MTA4-FMB32-32	32	78	32	24	M16
MTA4-FMB40-32	40	88	32	27	M20



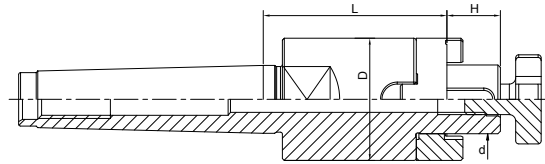
Size	d	D	L	H	M
MTB3-FMB16-48	16	38	48	17	M8
MTB3-FMB22-48	22	48	48	19	M10
MTB3-FMB27-48	27	58	48	21	M12
MTB3-FMB32-48	32	78	48	24	M16
MTB3-FMB40-48	40	88	48	27	M20
MTB4-FMB22-55	22	48	55	19	M10
MTB4-FMB27-55	27	58	55	21	M12
MTB4-FMB32-55	32	78	55	24	M16
MTB4-FMB40-55	40	88	55	27	M20

ACCESSORY



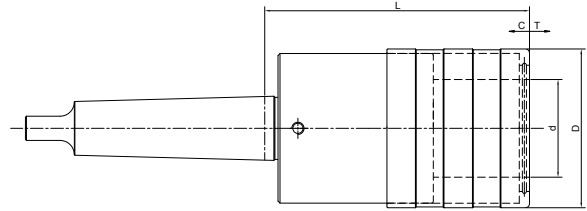
Combi Shell Mill Holder DIN6358

混合插入式铣刀柄



Size	d	D	H	L
MTB2-SEMC16-48	16	32	17	48
MTB2-SEMC22-48	22	40	19	48
MTB2-SEMC27-55	27	48	21	55
MTB2-SEMC32-55	32	58	24	55
MTB3-SEMC16-48	16	32	17	48
MTB3-SEMC22-50	22	40	19	50
MTB3-SEMC27-55	27	48	21	55
MTB3-SEMC32-55	32	58	24	55
MTB4-SEMC16-55	16	32	17	55
MTB4-SEMC22-55	22	40	19	55
MTB4-SEMC27-55	27	48	21	55
MTB4-SEMC32-55	32	58	24	55

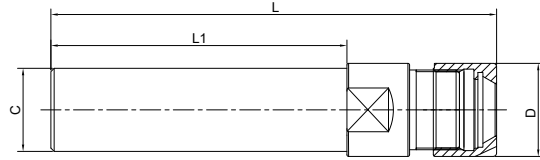
Quick Change Tapping Chuck with Length Compensation 弹性快换攻丝刀柄



Size	D	d	L	T	C
MTA2-TC312-46	36	19	46	7.5	7.5
MTA3-TC312-46	36	19	46	7.5	7.5
MTA3-TC820-68	53	31	68	12.5	12.5
MTA4-TC820-70	35	31	70	12.5	12.5
MTA4-TC1433-108	78	48	108	22	22
MTA5-TC1433-103	78	48	103	22	22

ER Collet Chuck with Mini Nut DIN6499

ER 弹簧夹头刀柄



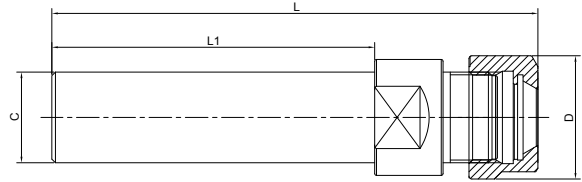
Metric

Size	C	D	L1	L
C8-ER8M-100	08	12	100	124.5
C10-ER8M-100	10	12	100	124.5
C10-ER8M-150	10	12	150	174.5
C12-ER11M-100	12	16	100	125
C16-ER11M-100	16	16	100	125
C16-ER11M-150	16	16	150	175
C16-ER16M-100	16	22	100	131
C16-ER16M-150	16	22	150	181
C20-ER16M-100	20	22	100	131
C20-ER16M-150	20	22	150	181
C20-ER20M-100	20	28	100	137
C20-ER20M-150	20	28	150	187
C25-ER16M-100	25	22	100	131
C25-ER16M-150	25	22	150	181
C25-ER20M-100	25	28	100	137
C25-ER20M-150	25	28	150	187

Inch

Size	C	D	L1	L
C1/2"-ER11M-4.0"	1/2"	16	4"	126.6
C1/2"-ER11M-6.0"	1/2"	16	6"	177.4
C1/2"-ER16M-4.0"	1/2"	22	4"	132.6
C1/2"-ER16M-6.0"	1/2"	22	6"	183.4

ER Collet Chuck with Hex Nut DIN6499 ER 弹簧夹头刀柄



Metric

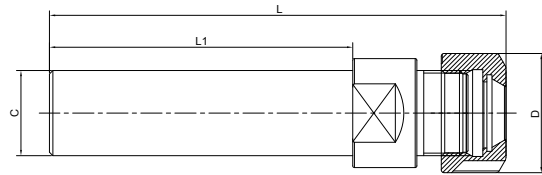
Size	C	D	L1	L
C10-ER8A-100	10	13.3	100	124.5
C10-ER11A-100	10	19	100	124
C12-ER8A-100	12	13.3	100	124.5
C12-ER11A-100	12	19	100	124
C16-ER11A-50	16	19	50	74
C16-ER11A-100	16	19	100	124
C16A-ER16A-100	16	28	100	131
C16A-ER16A-150	16	28	150	181
C20-ER16A-100	20	28	100	131
C20-ER16A-150	20	28	150	181
C20A-ER20A-100	20	34	100	136.5
C20A-ER20A-150	20	34	150	186.5
C25-ER16A-100	25	28	100	136.5
C25-ER16A-150	25	28	150	186.5
C25-ER20A-100	25	34	100	136.5
C25-ER20A-150	25	34	150	186.5

Inch

Size	C	D	L1	L
C1/2"-ER11A-3.5"	1/2"	19	3.5"	112.9
C1/2"-ER11A-6"	1/2"	19	6"	176.4
C3/4"-ER16A-4"	3/4"	28	4"	132.6
C3/4"-ER16A-6"	3/4"	28	6"	183.4
C3/4"-ER20A-4"	3/4"	34	4"	138.6
C3/4"-ER20A-6"	3/4"	34	6"	189.4

ER Collet Chuck with UM Nut DIN6499

ER 弹簧夹头刀柄



Metric

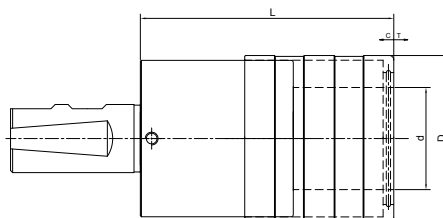
Size	C	D	L1	L
C20-ER25UM-100	20	42	100	144
C25-ER25UM-100	25	42	100	144
C25-ER25UM-150	25	42	150	194
C25-ER25UM-200	25	42	200	244
C25-ER32UM-100	25	50	100	148
C32-ER25UM-100	32	42	100	144
C32-ER25UM-150	32	42	150	194
C32-ER32UM-100	32	50	100	148
C32-ER32UM-150	32	50	150	198
C32-ER32UM-200	32	50	200	248
C32-ER40UM-100	32	63	100	151
C40-ER32UM-100	40	50	100	148
C40-ER40UM-100	40	63	100	151
C40-ER40UM-150	40	63	150	201

Inch

Size	C	D	L1	L
C3/4"-ER25-4"	3/4"	42	4"	145.6
C1"-ER25-6"	1"	42	6"	196.4
C1"-ER32-4"	1"	50	4"	149.6
C1-1/4"-ER32-6"	1-1/4"	50	6"	200.4

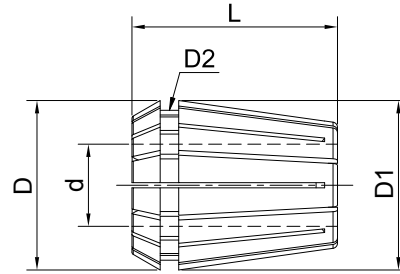


Quick Change Tapping Chuck with Length Compensation 弹性快换攻丝刀柄



Size	L	D	d	T	C
SLAB20-TC312-41	41	36	19	7.5	7.5
SLAB25-TC312-41	41	36	19	7.5	7.5
SLAB25-TC820-63	63	53	31	12.5	12.5
SLAB32-TC312-41	41	36	19	7.5	7.5
SLAB32-TC820-63	63	53	31	12.5	12.5
SLAB32-TC1433-97	97	78	48	22	22
SLAB40-TC312-41	41	36	19	7.5	7.5
SLAB40-TC820-63	63	53	31	12.5	12.5
SLAB40-TC1433-97	97	78	48	22	22

ER Collet ER 弹簧夹头



Metric

Size	d	D1	D	D2	L
ER8-01	1-0.5	8	8.45	6.5	13.5
ER8-01.5	1.5-1	8	8.45	6.5	13.5
ER8-02	2-1.5	8	8.45	6.5	13.5
ER8-02.5	2.5-2	8	8.45	6.5	13.5
ER8-03	3-2.5	8	8.45	6.5	13.5
ER8-03.5	3.5-3	8	8.45	6.5	13.5
ER8-04	4-3.5	8	8.45	6.5	13.5
ER8-04.5	4.5-4	8	8.45	6.5	13.5
ER8-05	5-4.5	8	8.45	6.5	13.5

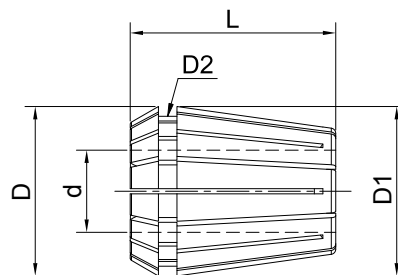
ER11-01	1-0.5	11	11.5	9.5	18
ER11-01.5	1.5-1	11	11.5	9.5	18
ER11-02	2-1.5	11	11.5	9.5	18
ER11-02.5	2.5-2	11	11.5	9.5	18
ER11-03	3-2.5	11	11.5	9.5	18
ER11-03.5	3.5-3	11	11.5	9.5	18
ER11-04	4-3.5	11	11.5	9.5	18
ER11-04.5	4.5-4	11	11.5	9.5	18
ER11-05	5-4.5	11	11.5	9.5	18
ER11-05.5	5.5-5	11	11.5	9.5	18
ER11-06	6-5.5	11	11.5	9.5	18
ER11-06.5	6.5-6	11	11.5	9.5	18
ER11-07	7-6.5	11	11.5	9.5	18

ER16-01	1-0.5	16	17	13.8	27.5
ER16-02	2-1	16	17	13.8	27.5
ER16-03	3-2	16	17	13.8	27.5
ER16-04	4-3	16	17	13.8	27.5
ER16-05	5-4	16	17	13.8	27.5
ER16-06	6-5	16	17	13.8	27.5
ER16-07	7-6	16	17	13.8	27.5
ER16-08	8-7	16	17	13.8	27.5
ER16-09	9-8	16	17	13.8	27.5
ER16-10	10-9	16	17	13.8	27.5

Size	d	D1	D	D2	L
ER20-01	1-0.5	20	21	17.4	31.5
ER20-02	2-1	20	21	17.4	31.5
ER20-03	3-2	20	21	17.4	31.5
ER20-04	4-3	20	21	17.4	31.5
ER20-05	5-4	20	21	17.4	31.5
ER20-06	6-5	20	21	17.4	31.5
ER20-07	7-6	20	21	17.4	31.5
ER20-08	8-7	20	21	17.4	31.5
ER20-09	9-8	20	21	17.4	31.5
ER20-10	10-9	20	21	17.4	31.5
ER20-11	11-10	20	21	17.4	31.5
ER20-12	12-11	20	21	17.4	31.5
ER20-13	13-12	20	21	17.4	31.5

ER25-01	1-0.5	25	26	22	34
ER25-02	2-1	25	26	22	34
ER25-03	3-2	25	26	22	34
ER25-04	4-3	25	26	22	34
ER25-05	5-4	25	26	22	34
ER25-06	6-5	25	26	22	34
ER25-07	7-6	25	26	22	34
ER25-08	8-7	25	26	22	34
ER25-09	9-8	25	26	22	34
ER25-10	10-9	25	26	22	34
ER25-11	11-10	25	26	22	34
ER25-12	12-11	25	26	22	34
ER25-13	13-12	25	26	22	34
ER25-14	14-13	25	26	22	34
ER25-15	15-14	25	26	22	34
ER25-16	16-15	25	26	22	34

ER Collet ER 弹簧夹头



Metric

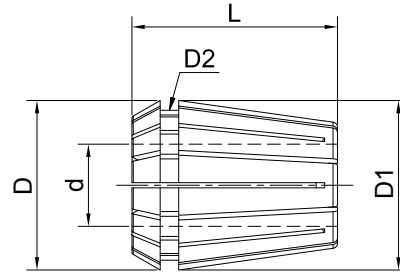
Size	d	D1	D	D2	L
ER32-02	2-1	32	33	29.2	40
ER32-03	3-2	32	33	29.2	40
ER32-04	4-3	32	33	29.2	40
ER32-05	5-4	32	33	29.2	40
ER32-06	6-5	32	33	29.2	40
ER32-07	7-6	32	33	29.2	40
ER32-08	8-7	32	33	29.2	40
ER32-09	9-8	32	33	29.2	40
ER32-10	10-9	32	33	29.2	40
ER32-11	11-10	32	33	29.2	40
ER32-12	12-11	32	33	29.2	40
ER32-13	13-12	32	33	29.2	40
ER32-14	14-13	32	33	29.2	40
ER32-15	15-14	32	33	29.2	40
ER32-16	16-15	32	33	29.2	40
ER32-17	17-16	32	33	29.2	40
ER32-18	18-17	32	33	29.2	40
ER32-19	19-18	32	33	29.2	40
ER32-20	20-19	32	33	29.2	40

ER40-03	3-2	40	41	36.2	46
ER40-04	4-3	40	41	36.2	46
ER40-05	5-4	40	41	36.2	46
ER40-06	6-5	40	41	36.2	46
ER40-07	7-6	40	41	36.2	46
ER40-08	8-7	40	41	36.2	46
ER40-09	9-8	40	41	36.2	46
ER40-10	10-9	40	41	36.2	46
ER40-11	11-10	40	41	36.2	46
ER40-12	12-11	40	41	36.2	46
ER40-13	13-12	40	41	36.2	46

Size	d	D1	D	D2	L
ER40-14	14-13	41	36.2	46	1.0
ER40-15	15-14	41	36.2	46	1.0
ER40-16	16-15	41	36.2	46	1.0
ER40-17	17-16	41	36.2	46	1.0
ER40-18	18-17	41	36.2	46	1.0
ER40-19	19-18	41	36.2	46	1.0
ER40-20	20-19	41	36.2	46	1.0
ER40-21	21-20	41	36.2	46	1.0
ER40-22	22-21	41	36.2	46	1.0
ER40-23	23-22	41	36.2	46	1.0
ER40-24	24-23	41	36.2	46	1.0
ER40-25	25-24	41	36.2	46	1.0
ER40-26	26-25	41	36.2	46	1.0

ER50-06	6-4	52	46	60	2.0
ER50-08	8-6	52	46	60	2.0
ER50-10	10-8	52	46	60	2.0
ER50-12	12-10	52	46	60	2.0
ER50-14	14-12	52	46	60	2.0
ER50-16	16-14	52	46	60	2.0
ER50-18	18-16	52	46	60	2.0
ER50-20	20-18	52	46	60	2.0
ER50-22	22-20	52	46	60	2.0
ER50-24	24-22	52	46	60	2.0
ER50-26	26-24	52	46	60	2.0
ER50-28	28-26	52	46	60	2.0
ER50-30	30-28	52	46	60	2.0
ER50-32	32-30	52	46	60	2.0
ER50-34	34-32	52	46	60	2.0

ER Collet ER 弹簧夹头



Metric

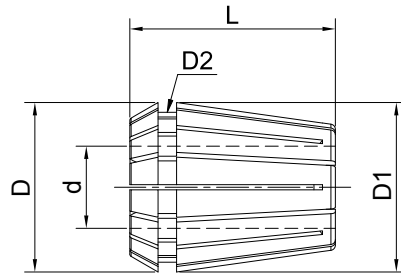
Size	d	D1	D	D2	L
ER11-3/64"	3/64	11	11.5	9.5	18
ER11-1/16"	1/16	11	11.5	9.5	18
ER11-5/64"	5/64	11	11.5	9.5	18
ER11-3/32"	3/32	11	11.5	9.5	18
ER11-7/64"	7/64	11	11.5	9.5	18
ER11-1/8"	1/8	11	11.5	9.5	18
ER11-9/64"	9/64	11	11.5	9.5	18
ER11-5/32"	5/32	11	11.5	9.5	18
ER11-11/64"	11/64	11	11.5	9.5	18
ER11-3/16"	3/16	11	11.5	9.5	18
ER11-13/64"	13/64	11	11.5	9.5	18
ER11-7/32"	7/32	11	11.5	9.5	18
ER11-15/64"	15/64	11	11.5	9.5	18
ER11-1/4"	1/4	11	11.5	9.5	18
ER11-17/64"	17/64	11	11.5	9.5	18

ER16-3/64"	3/64	16	17	13.8	27.5
ER16-1/16"	1/16	16	17	13.8	27.5
ER16-5/64"	5/64	16	17	13.8	27.5
ER16-3/32"	3/32	16	17	13.8	27.5
ER16-7/64"	7/64	16	17	13.8	27.5
ER16-1/8"	1/8	16	17	13.8	27.5
ER16-9/64"	9/64	16	17	13.8	27.5
ER16-5/32"	5/32	16	17	13.8	27.5
ER16-11/64"	11/64	16	17	13.8	27.5
ER16-3/16"	3/16	16	17	13.8	27.5
ER16-13/64"	13/64	16	17	13.8	27.5
ER16-7/32"	7/32	16	17	13.8	27.5
ER16-15/64"	15/64	16	17	13.8	27.5
ER16-1/4"	1/4	16	17	13.8	27.5
ER16-17/64"	17/64	16	17	13.8	27.5
ER16-9/32"	9/32	16	17	13.8	27.5
ER16-19/64"	19/64	16	17	13.8	27.5
ER16-5/16"	5/16	16	17	13.8	27.5
ER16-21/64"	21/64	16	17	13.8	27.5

Size	d	D1	D	D2	L
ER16-11/32"	11/32	16	17	13.8	27.5
ER16-23/64"	23/64	16	17	13.8	27.5
ER16-3/8"	3/8	16	17	13.8	27.5

ER20-3/64"	3/64	20	21	17.4	31.5
ER20-1/16"	1/16	20	21	17.4	31.5
ER20-5/64"	5/64	20	21	17.4	31.5
ER20-3/32"	3/32	20	21	17.4	31.5
ER20-7/64"	7/64	20	21	17.4	31.5
ER20-1/8"	1/8	20	21	17.4	31.5
ER20-9/64"	9/64	20	21	17.4	31.5
ER20-5/32"	5/32	20	21	17.4	31.5
ER20-11/64"	11/64	20	21	17.4	31.5
ER20-3/16"	3/16	20	21	17.4	31.5
ER20-13/64"	13/64	20	21	17.4	31.5
ER20-7/32"	7/32	20	21	17.4	31.5
ER20-15/64"	15/64	20	21	17.4	31.5
ER20-1/4"	1/4	20	21	17.4	31.5
ER20-17/64"	17/64	20	21	17.4	31.5
ER20-9/32"	9/32	20	21	17.4	31.5
ER20-19/64"	19/64	20	21	17.4	31.5
ER20-5/16"	5/16	20	21	17.4	31.5
ER20-21/64"	21/64	20	21	17.4	31.5
ER20-11/32"	11/32	20	21	17.4	31.5
ER20-23/64"	23/64	20	21	17.4	31.5
ER20-3/8"	3/8	20	21	17.4	31.5
ER20-25/64"	25/64	20	21	17.4	31.5
ER20-13/32"	13/32	20	21	17.4	31.5
ER20-27/64"	27/64	20	21	17.4	31.5
ER20-7/16"	7/16	20	21	17.4	31.5
ER20-29/64"	29/64	20	21	17.4	31.5
ER20-15/32"	15/32	20	21	17.4	31.5
ER20-31/64"	31/64	20	21	17.4	31.5
ER20-1/2"	1/2	20	21	17.4	31.5
ER20-33/64"	33/64	20	21	17.4	31.5

ER Collet ER 弹簧夹头



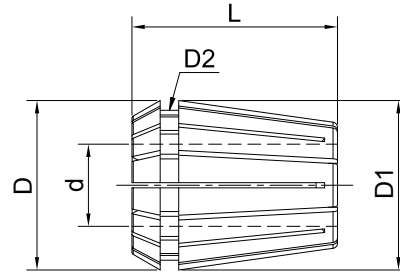
Metric

Size	d	D1	D	D2	L
ER25-3/64"	3/64	25	26	22	34
ER25-1/16"	1/16	25	26	22	34
ER25-5/64"	5/64	25	26	22	34
ER25-3/32"	3/32	25	26	22	34
ER25-7/64"	7/64	25	26	22	34
ER25-1/8"	1/8	25	26	22	34
ER25-9/64"	9/64	25	26	22	34
ER25-5/32"	5/32	25	26	22	34
ER25-11/64"	11/64	25	26	22	34
ER25-3/16"	3/16	25	26	22	34
ER25-13/64"	13/64	25	26	22	34
ER25-7/32"	7/32	25	26	22	34
ER25-15/64"	15/64	25	26	22	34
ER25-1/4"	1/4	25	26	22	34
ER25-17/64"	17/64	25	26	22	34
ER25-9/32"	9/32	25	26	22	34
ER25-19/64"	19/64	25	26	22	34
ER25-5/16"	5/16	25	26	22	34
ER25-21/64"	21/64	25	26	22	34
ER25-11/32"	11/32	25	26	22	34
ER25-23/64"	23/64	25	26	22	34
ER25-3/8"	3/8	25	26	22	34
ER25-25/64"	25/64	25	26	22	34
ER25-13/32"	13/32	25	26	22	34
ER25-27/64"	27/64	25	26	22	34
ER25-7/16"	7/16	25	26	22	34
ER25-29/64"	29/64	25	26	22	34
ER25-15/32"	15/32	25	26	22	34
ER25-31/64"	31/64	25	26	22	34
ER25-1/2"	1/2	25	26	22	34
ER25-33/64"	33/64	25	26	22	34
ER25-17/32"	17/32	25	26	22	34
ER25-35/64"	35/64	25	26	22	34
ER25-9/16"	9/16	25	26	22	34
ER25-37/64"	37/64	25	26	22	34

Size	d	D1	D	D2	L
ER25-19/32"	19/32	25	26	22	34
ER25-39/64"	39/64	25	26	22	34
ER25-5/8"	5/8	25	26	22	34

ER32-1/16"	1/16	32	33	29.2	40
ER32-3/32"	3/32	32	33	29.2	40
ER32-1/8"	1/8	32	33	29.2	40
ER32-5/32"	5/32	32	33	29.2	40
ER32-3/16"	3/16	32	33	29.2	40
ER32-7/32"	7/32	32	33	29.2	40
ER32-1/4"	1/4	32	33	29.2	40
ER32-9/32"	9/32	32	33	29.2	40
ER32-5/16"	5/16	32	33	29.2	40
ER32-11/32"	11/32	32	33	29.2	40
ER32-3/8"	3/8	32	33	29.2	40
ER32-13/32"	13/32	32	33	29.2	40
ER32-7/16"	7/16	32	33	29.2	40
ER32-15/32"	15/32	32	33	29.2	40
ER32-1/2"	1/2	32	33	29.2	40
ER32-17/32"	17/32	32	33	29.2	40
ER32-9/16"	9/16	32	33	29.2	40
ER32-19/32"	19/32	32	33	29.2	40
ER32-5/8"	5/8	32	33	29.2	40
ER32-21/32"	21/32	32	33	29.2	40
ER32-11/16"	11/16	32	33	29.2	40
ER32-23/32"	23/32	32	33	29.2	40
ER32-3/4"	3/4	32	33	29.2	40
ER32-25/32"	25/32	32	33	29.2	40

ER Collet ER 弹簧夹头



Metric

Size	d	D1	D	D2	L
ER40-1/8"	1/8	40	41	36.2	46
ER40-5/32"	5/32	40	41	36.2	46
ER40-3/16"	3/16	40	41	36.2	46
ER40-7/32"	7/32	40	41	36.2	46
ER40-1/4"	1/4	40	41	36.2	46
ER40-9/32"	9/32	40	41	36.2	46
ER40-5/16"	5/16	40	41	36.2	46
ER40-11/32"	11/32	40	41	36.2	46
ER40-3/8"	3/8	40	41	36.2	46
ER40-13/32"	13/32	40	41	36.2	46
ER40-7/16"	7/16	40	41	36.2	46
ER40-15/32"	15/32	40	41	36.2	46
ER40-1/2"	1/2	40	41	36.2	46
ER40-17/32"	17/32	40	41	36.2	46
ER40-9/16"	9/16	40	41	36.2	46
ER40-19/32"	19/32	40	41	36.2	46
ER40-5/8"	5/8	40	41	36.2	46
ER40-21/32"	21/32	40	41	36.2	46
ER40-11/16"	11/16	40	41	36.2	46
ER40-23/32"	23/32	40	41	36.2	46
ER40-3/4"	3/4	40	41	36.2	46
ER40-25/32"	25/32	40	41	36.2	46
ER40-13/16"	13/16	40	41	36.2	46
ER40-27/32"	27/32	40	41	36.2	46
ER40-7/8"	7/8	40	41	36.2	46
ER40-29/32"	29/32	40	41	36.2	46
ER40-15/16"	15/16	40	41	36.2	46
ER40-31/32"	31/32	40	41	36.2	46

Size	d	D1	D	D2	L
ER50-1/4"	1/4	50	52	46	60
ER50-9/32"	9/32	50	52	46	60
ER50-5/16"	5/16	50	52	46	60
ER50-11/32"	11/32	50	52	46	60
ER50-3/8"	3/8	50	52	46	60
ER50-13/32"	13/32	50	52	46	60
ER50-7/16"	7/16	50	52	46	60
ER50-15/32"	15/32	50	52	46	60
ER50-1/2"	1/2	50	52	46	60
ER50-17/32"	17/32	50	52	46	60
ER50-9/16"	9/16	50	52	46	60
ER50-19/32"	19/32	50	52	46	60
ER50-5/8"	5/8	50	52	46	60
ER50-21/32"	21/32	50	52	46	60
ER50-11/16"	11/16	50	52	46	60
ER50-23/32"	23/32	50	52	46	60
ER50-3/4"	3/4	50	52	46	60
ER50-25/32"	25/32	50	52	46	60
ER50-13/16"	13/16	50	52	46	60
ER50-27/32"	27/32	50	52	46	60
ER50-7/8"	7/8	50	52	46	60
ER50-29/32"	29/32	50	52	46	60
ER50-15/16"	15/16	50	52	46	60
ER50-31/32"	31/32	50	52	46	60
ER50-1"	1"	50	52	46	60
ER50-1-1/32"	1-1/32	50	52	46	60
ER50-1-1/16"	1-1/16	50	52	46	60
ER50-1-3/32"	1-3/32	50	52	46	60
ER50-1-1/8"	1-1/8	50	52	46	60
ER50-1-5/32"	1-5/32	50	52	46	60
ER50-1-3/16"	1-3/16	50	52	46	60
ER50-1-7/32"	1-7/32	50	52	46	60
ER50-1-1/4"	1-1/4	50	52	46	60
ER50-1-9/32"	1-9/32	50	52	46	60
ER50-1-5/16"	1-5/16	50	52	46	60

ER Collet Set
ER 筒夹套装



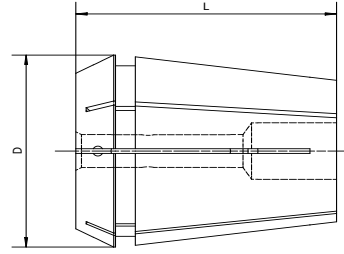
Metric

Size	Collet Diameter	PCS/SET
ER8-9 PCS	1,1.5,2,2.5,3,3.5,4,4.5,5	9
ER8-5 PCS	1,2,3,4,5	5
ER11-7 PCS	1,2,3,4,5,6,7	7
ER11-13 PCS	1,1.5,2,2.5,3,3.5,4,4.5,5,5.5,6,6.5,7	13
ER16-10 PCS	1,2,3,4,5,6,7,8,9,10	10
ER20-13 PCS	1,2,3,4,5,6,7,8,9,10,11,12,13	13
ER25-15 PCS	2,3,4,5,6,7,8,9,10,11,12,13,14,15,16	15
ER32-18 PCS	3,4,5,6,7,8,9,10,11,12,13,14,15,16,17,18,19,20	18
ER40-23 PCS	4,5,6,7,8,9,10,11,12,13,14,15,16,17,18,19,20,21,22,23,24,25,26	23

Inch

Size	Collet Diameter	PCS/SET
ER8-6 PCS (inch)	1/32, 1/16, 3/32, 1/8, 5/32, 3/16	6
ER16-8 PCS (inch)	1/8, 5/32, 3/16, 7/32, 1/4, 5/16, 11/32, 3/8	8
ER20-11 PCS (inch)	1/8, 5/32, 3/16, 7/32, 1/4, 9/32, 5/16, 11/32, 3/8, 7/16, 1/2	11
ER25-9 PCS (inch)	1/8, 3/16, 1/4, 5/16, 3/8, 7/16, 1/2, 9/16, 5/8	9
ER32-18 PCS (inch)	"1/8, 5/32, 3/16, 7/32, 1/4, 9/32, 5/16, 11/32, 3/8, 13/32, 7/16, 15/32, 1/2, 9/16, 5/8, 11/16, 23/32, 3/4"	18
ER40-23 PCS (inch)	1/8, 5/32, 3/16, 7/32, 1/4, 9/32, 5/16, 11/32, 3/8, 13/32, 7/16, 15/32, 1/2, 9/16, 5/8, 11/16, 23/32, 3/4, 13/16, 27/32, 7/8, 29/32, 1"	23

Rubber Sealed Collet ER 胶条止水筒夹



Size	D	L	Diameter
ERS16-03	16.74	27.5	3
ERS16-04	16.74	27.5	4
ERS16-05	16.74	27.5	5
ERS16-06	16.74	27.5	6
ERS16-07	16.74	27.5	7
ERS16-08	16.74	27.5	8
ERS16-09	16.74	27.5	9
ERS16-10	16.74	27.5	10

Size	D	L	Diameter
ERS16-03	16.74	27.5	3
ERS16-04	16.74	27.5	4
ERS16-05	16.74	27.5	5
ERS16-06	16.74	27.5	6
ERS16-07	16.74	27.5	7
ERS16-08	16.74	27.5	8
ERS16-09	16.74	27.5	9
ERS16-10	16.74	27.5	10

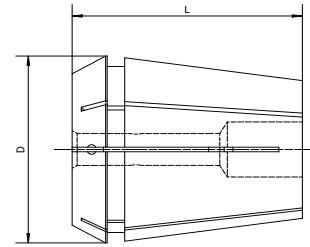
ERS20-03	20.74	31.5	3
ERS20-04	20.74	31.5	4
ERS20-05	20.74	31.5	5
ERS20-06	20.74	31.5	6
ERS20-07	20.74	31.5	7
ERS20-08	20.74	31.5	8
ERS20-09	20.74	31.5	9
ERS20-10	20.74	31.5	10
ERS20-11	20.74	31.5	11
ERS20-12	20.74	31.5	12
ERS20-13	20.74	31.5	13

ERS20-03	20.74	31.5	3
ERS20-04	20.74	31.5	4
ERS20-05	20.74	31.5	5
ERS20-06	20.74	31.5	6
ERS20-07	20.74	31.5	7
ERS20-08	20.74	31.5	8
ERS20-09	20.74	31.5	9
ERS20-10	20.74	31.5	10
ERS20-11	20.74	31.5	11
ERS20-12	20.74	31.5	12
ERS20-13	20.74	31.5	13

ERS25-03	25.74	34	3
ERS25-04	25.74	34	4
ERS25-05	25.74	34	5
ERS25-06	25.74	34	6
ERS25-07	25.74	34	7
ERS25-08	25.74	34	8
ERS25-09	25.74	34	9
ERS25-10	25.74	34	10
ERS25-11	25.74	34	11
ERS25-12	25.74	34	12
ERS25-13	25.74	34	13
ERS25-14	25.74	34	14
ERS25-15	25.74	34	15
ERS25-16	25.74	34	16

ERS25-03	25.74	34	3
ERS25-04	25.74	34	4
ERS25-05	25.74	34	5
ERS25-06	25.74	34	6
ERS25-07	25.74	34	7
ERS25-08	25.74	34	8
ERS25-09	25.74	34	9
ERS25-10	25.74	34	10
ERS25-11	25.74	34	11
ERS25-12	25.74	34	12
ERS25-13	25.74	34	13
ERS25-14	25.74	34	14
ERS25-15	25.74	34	15
ERS25-16	25.74	34	16

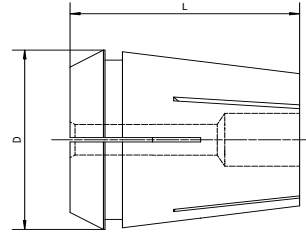
Rubber Sealed Collet ER 胶条止水筒夹



Size	D	L	Diameter
ERS32-03	32.74	40	3
ERS32-04	32.74	40	4
ERS32-05	32.74	40	5
ERS32-06	32.74	40	6
ERS32-07	32.74	40	7
ERS32-08	32.74	40	8
ERS32-09	32.74	40	9
ERS32-10	32.74	40	10
ERS32-11	32.74	40	11
ERS32-12	32.74	40	12
ERS32-13	32.74	40	13
ERS32-14	32.74	40	14
ERS32-15	32.74	40	15
ERS32-16	32.74	40	16
ERS32-17	32.74	40	17
ERS32-18	32.74	40	18
ERS32-19	32.74	40	19
ERS32-20	32.74	40	20

Size	D	L	Diameter
ERS40-04	40.74	46	4
ERS40-05	40.74	46	5
ERS40-06	40.74	46	6
ERS40-07	40.74	46	7
ERS40-08	40.74	46	8
ERS40-09	40.74	46	9
ERS40-10	40.74	46	10
ERS40-11	40.74	46	11
ERS40-12	40.74	46	12
ERS40-13	40.74	46	13
ERS40-14	40.74	46	14
ERS40-15	40.74	46	15
ERS40-16	40.74	46	16
ERS40-17	40.74	46	17
ERS40-18	40.74	46	18
ERS40-19	40.74	46	19
ERS40-20	40.74	46	20
ERS40-21	40.74	46	21
ERS40-22	40.74	46	22
ERS40-23	40.74	46	23
ERS40-24	40.74	46	24
ERS40-25	40.74	46	25
ERS40-26	40.74	46	26

ER Sealed Collet ER 刚性止水筒夹



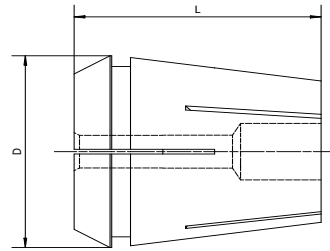
Size	D	L	Diameter
ER11SS-03	11.3	18	3
ER11SS-03.5	11.3	18	3.5
ER11SS-04	11.3	18	4
ER11SS-04.5	11.3	18	4.5
ER11SS-05	11.3	18	5
ER11SS-05.5	11.3	18	5.5
ER11SS-06	11.3	18	6
ER11SS-06.5	11.3	18	6.5
ER11SS-07	11.3	18	7

ER16SS-03	16.74	27.5	3
ER16SS-04	16.74	27.5	4
ER16SS-05	16.74	27.5	5
ER16SS-06	16.74	27.5	6
ER16SS-07	16.74	27.5	7
ER16SS-08	16.74	27.5	8
ER16SS-09	16.74	27.5	9
ER16SS-10	16.74	27.5	10

ER20SS-03	20.74	31.5	3
ER20SS-04	20.74	31.5	4
ER20SS-05	20.74	31.5	5
ER20SS-06	20.74	31.5	6
ER20SS-07	20.74	31.5	7
ER20SS-08	20.74	31.5	8
ER20SS-09	20.74	31.5	9
ER20SS-10	20.74	31.5	10
ER20SS-11	20.74	31.5	11
ER20SS-12	20.74	31.5	12
ER20SS-13	20.74	31.5	13

Size	D	L	Diameter
ER25SS-03	25.74	34	3
ER25SS-04	25.74	34	4
ER25SS-05	25.74	34	5
ER25SS-06	25.74	34	6
ER25SS-07	25.74	34	7
ER25SS-08	25.74	34	8
ER25SS-09	25.74	34	9
ER25SS-10	25.74	34	10
ER25SS-11	25.74	34	11
ER25SS-12	25.74	34	12
ER25SS-13	25.74	34	13
ER25SS-14	25.74	34	14
ER25SS-15	25.74	34	15
ER25SS-16	25.74	34	16

ER Sealed Collet
ER 刚性止水筒夹

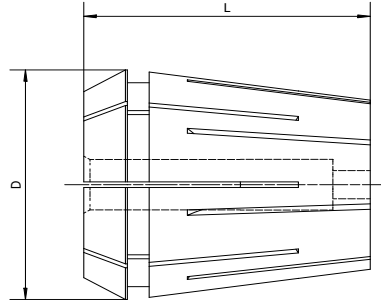


Size	D	L	Diameter
ER32SS-03	32.74	40	3
ER32SS-04	32.74	40	4
ER32SS-05	32.74	40	5
ER32SS-06	32.74	40	6
ER32SS-07	32.74	40	7
ER32SS-08	32.74	40	8
ER32SS-09	32.74	40	9
ER32SS-10	32.74	40	10
ER32SS-11	32.74	40	11
ER32SS-12	32.74	40	12
ER32SS-13	32.74	40	13
ER32SS-14	32.74	40	14
ER32SS-15	32.74	40	15
ER32SS-16	32.74	40	16
ER32SS-17	32.74	40	17
ER32SS-18	32.74	40	18
ER32SS-19	32.74	40	19
ER32SS-20	32.74	40	20

Size	D	L	Diameter
ER40SS-04	40.74	46	4
ER40SS-05	40.74	46	5
ER40SS-06	40.74	46	6
ER40SS-07	40.74	46	7
ER40SS-08	40.74	46	8
ER40SS-09	40.74	46	9
ER40SS-10	40.74	46	10
ER40SS-11	40.74	46	11
ER40SS-12	40.74	46	12
ER40SS-13	40.74	46	13
ER40SS-14	40.74	46	14
ER40SS-15	40.74	46	15
ER40SS-16	40.74	46	16
ER40SS-17	40.74	46	17
ER40SS-18	40.74	46	18
ER40SS-19	40.74	46	19
ER40SS-20	40.74	46	20
ER40SS-21	40.74	46	21
ER40SS-22	40.74	46	22
ER40SS-23	40.74	46	23
ER40SS-24	40.74	46	24
ER40SS-25	40.74	46	25
ER40SS-26	40.74	46	26

ER Sealed Collet

ER 攻丝筒夹



Size	D	L	Diameter
ER16G (3.5*2.7)	16.74	27.5	3.5*2.7
ER16G (4.0*3.0)	16.74	27.5	4.0*3.0
ER16G (4.5*3.4)	16.74	27.5	4.5*3.4
ER16G (5.5*4.3)	16.74	27.5	5.5*4.3
ER16G (6*4.9)	16.74	27.5	6*4.9
ER16G (7*5.5)	16.74	27.5	7*5.5
ER16G (8*6.2)	16.74	27.5	8*6.2

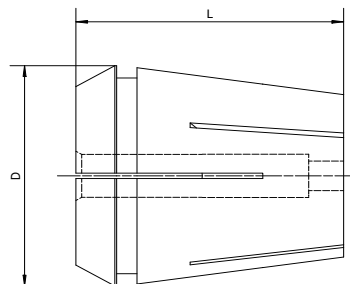
ER20G (3.5*2.7)	20.74	31.5	3.5*2.7
ER20G (4.0*3.0)	20.74	31.5	4.0*3.0
ER20G (4.5*3.4)	20.74	31.5	4.5*3.4
ER20G (5.5*4.3)	20.74	31.5	5.5*4.3
ER20G (6.0*4.9)	20.74	31.5	6.0*4.9
ER20G (7*5.5)	20.74	31.5	7*5.5
ER20G (8*6.2)	20.74	31.5	8*6.2
ER20G (9*7.0)	20.74	31.5	9*7.0
ER20G (10*8.0)	20.74	31.5	10*8.0

ER25G (3.5*2.7)	25.74	34	3.5*2.7
ER25G (4.0*3.0)	25.74	34	4.0*3.0
ER25G (4.5*3.4)	25.74	34	4.5*3.4
ER25G (5.5*4.3)	25.74	34	5.5*4.3
ER25G (6.0*4.9)	25.74	34	6.0*4.9
ER25G (7.0*5.5)	25.74	34	7.0*5.5
ER25G (8.0*6.2)	25.74	34	8.0*6.2
ER25G (9*7.0)	25.74	34	9*7.0
ER25G (10*8.0)	25.74	34	10*8.0
ER25G (11*9.0)	25.74	34	11*9.0
ER25G (12*9.0)	25.74	34	12*9.0
ER25G (14*11.0)	25.74	34	14*11.0
ER25G (16*12.0)	25.74	34	16*12.0

Size	D	L	Diameter
ER32G (3.5*2.7)	32.74	40	3.5*2.7
ER32G (4.0*3.0)	32.74	40	4.0*3.0
ER32G (4.5*3.4)	32.74	40	4.5*3.4
ER32G (5.5*4.3)	32.74	40	5.5*4.3
ER32G (6.0*4.9)	32.74	40	6.0*4.9
ER32G (7.0*5.5)	32.74	40	7.0*5.5
ER32G (8.0*6.2)	32.74	40	8.0*6.2
ER32G (9.0*7.0)	32.74	40	9.0*7.0
ER32G (10*8.0)	32.74	40	10*8.0
ER32G (11*9.0)	32.74	40	11*9.0
ER32G (12*9.0)	32.74	40	12*9.0
ER32G (14*11.0)	32.74	40	14*11.0
ER32G (16*12.0)	32.74	40	16*12.0
ER32G (18*14.5)	32.74	40	18*14.5
ER32G (20*16.0)	32.74	40	20*16.0

ER40G (3.5*2.7)	40.74	46	3.5*2.7
ER40G (4.0*3.0)	40.74	46	4.0*3.0
ER40G (4.5*3.4)	40.74	46	4.5*3.4
ER40G (5.5*4.3)	40.74	46	5.5*4.3
ER40G (6.0*4.9)	40.74	46	6.0*4.9
ER40G (7.0*5.5)	40.74	46	7.0*5.5
ER40G (8.0*6.2)	40.74	46	8.0*6.2
ER40G (9.0*7.0)	40.74	46	9.0*7.0
ER40G (10.0*8.0)	40.74	46	10.0*8.0
ER40G (11*9.0)	40.74	46	11*9.0
ER40G (12*9.0)	40.74	46	12*9.0
ER40G (14*11.0)	40.74	46	14*11.0
ER40G (16*12.0)	40.74	46	16*12.0
ER40G (18*14.5)	40.74	46	18*14.5
ER40G (20*16.0)	40.74	46	20*16.0
ER40G (22*18.0)	40.74	46	22*18.0
ER40G (25*20.0)	40.74	46	25*20.0

ER Sealed Collet ER 止水攻丝筒夹



Size	D	L	Diameter
ERS16G (3.5*2.7)	16.74	27.5	3.5*2.7
ERS16G (4.0*3.0)	16.74	27.5	4.0*3.0
ERS16G (4.5*3.4)	16.74	27.5	4.5*3.4
ERS16G (5.5*4.3)	16.74	27.5	5.5*4.3
ERS16G (6*4.9)	16.74	27.5	6*4.9
ERS16G (7*5.5)	16.74	27.5	7*5.5
ERS16G (8*6.2)	16.74	27.5	8*6.2

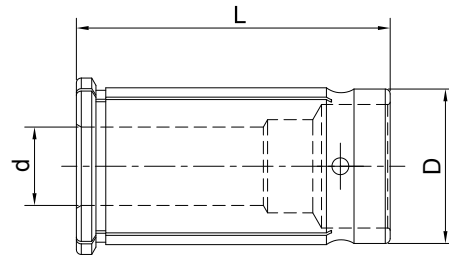
ERS20G (3.5*2.7)	20.74	31.5	3.5*2.7
ERS20G (4.0*3.0)	20.74	31.5	4.0*3.0
ERS20G (4.5*3.4)	20.74	31.5	4.5*3.4
ERS20G (5.5*4.3)	20.74	31.5	5.5*4.3
ERS20G (6.0*4.9)	20.74	31.5	6.0*4.9
ERS20G (7*5.5)	20.74	31.5	7*5.5
ERS20G (8*6.2)	20.74	31.5	8*6.2
ERS20G (9*7.0)	20.74	31.5	9*7.0
ERS20G (10*8.0)	20.74	31.5	10*8.0

ERS25G (3.5*2.7)	25.74	34	3.5*2.7
ERS25G (4.0*3.0)	25.74	34	4.0*3.0
ERS25G (4.5*3.4)	25.74	34	4.5*3.4
ERS25G (5.5*4.3)	25.74	34	5.5*4.3
ERS25G (6.0*4.9)	25.74	34	6.0*4.9
ERS25G (7.0*5.5)	25.74	34	7.0*5.5
ERS25G (8.0*6.2)	25.74	34	8.0*6.2
ERS25G (9*7.0)	25.74	34	9*7.0
ERS25G (10*8.0)	25.74	34	10*8.0
ERS25G (11*9.0)	25.74	34	11*9.0
ERS25G (12*9.0)	25.74	34	12*9.0
ERS25G (14*11.0)	25.74	34	14*11.0
ERS25G (16*12.0)	25.74	34	16*12.0

Size	D	L	Diameter
ERS32G (3.5*2.7)	32.74	40	3.5*2.7
ERS32G (4.0*3.0)	32.74	40	4.0*3.0
ERS32G (4.5*3.4)	32.74	40	4.5*3.4
ERS32G (5.5*4.3)	32.74	40	5.5*4.3
ERS32G (6.0*4.9)	32.74	40	6.0*4.9
ERS32G (7.0*5.5)	32.74	40	7.0*5.5
ERS32G (8.0*6.2)	32.74	40	8.0*6.2
ERS32G (9.0*7.0)	32.74	40	9.0*7.0
ERS32G (10*8.0)	32.74	40	10*8.0
ERS32G (11*9.0)	32.74	40	11*9.0
ERS32G (12*9.0)	32.74	40	12*9.0
ERS32G (14*11.0)	32.74	40	14*11.0
ERS32G (16*12.0)	32.74	40	16*12.0
ERS32G (18*14.5)	32.74	40	18*14.5
ERS32G (20*16.0)	32.74	40	20*16.0

ERS40G (3.5*2.7)	40.74	46	3.5*2.7
ERS40G (4.0*3.0)	40.74	46	4.0*3.0
ERS40G (4.5*3.4)	40.74	46	4.5*3.4
ERS40G (5.5*4.3)	40.74	46	5.5*4.3
ERS40G (6.0*4.9)	40.74	46	6.0*4.9
ERS40G (7.0*5.5)	40.74	46	7.0*5.5
ERS40G (8.0*6.2)	40.74	46	8.0*6.2
ERS40G (9.0*7.0)	40.74	46	9.0*7.0
ERS40G (10.0*8.0)	40.74	46	10.0*8.0
ERS40G (11*9.0)	40.74	46	11*9.0
ERS40G (12*9.0)	40.74	46	12*9.0
ERS40G (14*11.0)	40.74	46	14*11.0
ERS40G (16*12.0)	40.74	46	16*12.0
ERS40G (18*14.5)	40.74	46	18*14.5
ERS40G (20*16.0)	40.74	46	20*16.0
ERS40G (22*18.0)	40.74	46	22*18.0
ERS40G (25*20.0)	40.74	46	25*20.0

Straight Shank Collet SC 直柄筒夹



Metric

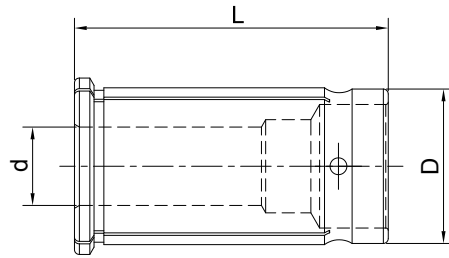
Size	d	D	L
SC16-03	3	16	45
SC16-04	4	16	45
SC16-05	5	16	45
SC16-06	6	16	45
SC16-08	8	16	45
SC16-10	10	16	45
SC16-12	12	16	45

SC20-03	3	20	50
SC20-04	4	20	50
SC20-05	5	20	50
SC20-06	6	20	50
SC20-08	8	20	50
SC20-10	10	20	50
SC20-12	12	20	50
SC20-14	14	20	50
SC20-16	16	20	50

SC25-03	3	25	60
SC25-04	4	25	60
SC25-05	5	25	60
SC25-06	6	25	60
SC25-08	8	25	60
SC25-10	10	25	60
SC25-12	12	25	60
SC25-14	14	25	60
SC25-16	16	25	60
SC25-18	18	25	60
SC25-20	20	25	60

Size	d	D	L
SC32-03	3	32	64
SC32-04	4	32	64
SC32-05	5	32	64
SC32-06	6	32	64
SC32-08	8	32	64
SC32-10	10	32	64
SC32-12	12	32	64
SC32-14	14	32	64
SC32-16	16	32	64
SC32-18	18	32	64
SC32-20	20	32	64
SC32-25	25	32	64
SC42-03	3	42	80
SC42-04	4	42	80
SC42-05	5	42	80
SC42-06	6	42	80
SC42-08	8	42	80
SC42-10	10	42	80
SC42-12	12	42	80
SC42-14	14	42	80
SC42-16	16	42	80
SC42-18	18	42	80
SC42-20	20	42	80
SC42-22	22	42	80
SC42-24	24	42	80
SC42-25	25	42	80
SC42-28	28	42	80
SC42-30	30	42	80
SC42-32	32	42	80

Straight Shank Collet SC 直柄筒夹

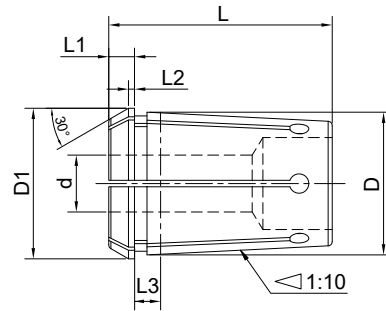


Inch

Size	d	D	L
SC1/2"	1/8"	1/2"	1.73"
SC1/2"	3/16"	1/2"	1.73"
SC1/2"	1/4"	1/2"	1.73"
SC1/2"	5/16"	1/2"	1.73"
SC1/2"	3/8"	1/2"	1.73"
SC3/4"	1/8"	3/4"	1.97"
SC1"	1/8"	1"	2.36"
SC1"	3/16"	1"	2.36"
SC1"	1/4"	1"	2.36"
SC1"	5/16"	1"	2.36"
SC1"	3/8"	1"	2.36"
SC1"	7/16"	1"	2.36"
SC1"	1/2"	1"	2.36"
SC1"	5/8"	1"	2.36"
SC1"	3/4"	1"	2.36"
SC1"	7/8"	1"	2.36"

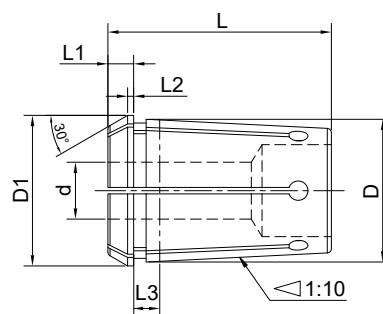
Size	d	D	L
SC1-1/4"	3/16"	1-1/4"	2.52"
SC1-1/4"	1/4"	1-1/4"	2.52"
SC1-1/4"	5/16"	1-1/4"	2.52"
SC1-1/4"	3/8"	1-1/4"	2.52"
SC1-1/4"	7/16"	1-1/4"	2.52"
SC1-1/4"	1/2"	1-1/4"	2.52"
SC1-1/4"	9/16"	1-1/4"	2.52"
SC1-1/4"	5/8"	1-1/4"	2.52"
SC1-1/4"	3/4"	1-1/4"	2.52"
SC1-1/4"	7/8"	1-1/4"	2.52"
SC1-1/4"	1"	1-1/4"	2.52"

OZ Collet OZ 筒夹 A 型



Size	d	D	D1	L	L1	L2	L3
OZ06A-01	1	10	11.5	21	3.5	0.5	4
OZ06A-02	2	10	11.5	21	3.5	0.5	4
OZ06A-03	3	10	11.5	21	3.5	0.5	4
OZ06A-04	4	10	11.5	21	3.5	0.5	4
OZ06A-05	5	10	11.5	21	3.5	0.5	4
OZ06A-06	6	10	11.5	21	3.5	0.5	4
OZ08A-03	3	12.65	14.5	26	4	0.8	4.5
OZ08A-04	4	12.65	14.5	26	4	0.8	4.5
OZ08A-05	5	12.65	14.5	26	4	0.8	4.5
OZ08A-06	6	12.65	14.5	26	4	0.8	4.5
OZ08A-07	7	12.65	14.5	26	4	0.8	4.5
OZ08A-08	8	12.65	14.5	26	4	0.8	4.5
OZ10A-01	1	15.15	17.2	30	4.5	0.8	4.5
OZ10A-02	2	15.15	17.2	30	4.5	0.8	4.5
OZ10A-03	3	15.15	17.2	30	4.5	0.8	4.5
OZ10A-04	4	15.15	17.2	30	4.5	0.8	4.5
OZ10A-05	5	15.15	17.2	30	4.5	0.8	4.5
OZ10A-06	6	15.15	17.2	30	4.5	0.8	4.5
OZ10A-07	7	15.15	17.2	30	4.5	0.8	4.5
OZ10A-08	8	15.15	17.2	30	4.5	0.8	4.5
OZ10A-09	9	15.15	17.2	30	4.5	0.8	4.5
OZ10A-10	10	15.15	17.2	30	4.5	0.8	4.5
OZ12A-01	1	17.75	19.8	34	5	1.1	4.5
OZ12A-02	2	17.75	19.8	34	5	1.1	4.5
OZ12A-03	3	17.75	19.8	34	5	1.1	4.5
OZ12A-04	4	17.75	19.8	34	5	1.1	4.5
OZ12A-05	5	17.75	19.8	34	5	1.1	4.5
OZ12A-06	6	17.75	19.8	34	5	1.1	4.5
OZ12A-07	7	17.75	19.8	34	5	1.1	4.5
OZ12A-08	8	17.75	19.8	34	5	1.1	4.5
OZ12A-09	9	17.75	19.8	34	5	1.1	4.5
OZ12A-10	10	17.75	19.8	34	5	1.1	4.5
OZ12A-11	11	17.75	19.8	34	5	1.1	4.5
OZ12A-12	12	17.75	19.8	34	5	1.1	4.5

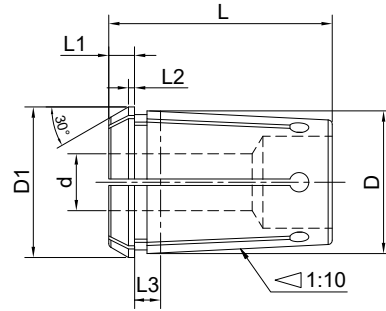
OZ Collet OZ 筒夹 A 型



Size	d	D	D1	L	L1	L2	L3
OZ16A-02	2	22.65	25.5	40	5.5	1.2	5.5
OZ16A-03	3	22.65	25.5	40	5.5	1.2	5.5
OZ16A-04	4	22.65	25.5	40	5.5	1.2	5.5
OZ16A-05	5	22.65	25.5	40	5.5	1.2	5.5
OZ16A-06	6	22.65	25.5	40	5.5	1.2	5.5
OZ16A-07	7	22.65	25.5	40	5.5	1.2	5.5
OZ16A-08	8	22.65	25.5	40	5.5	1.2	5.5
OZ16A-09	9	22.65	25.5	40	5.5	1.2	5.5
OZ16A-10	10	22.65	25.5	40	5.5	1.2	5.5
OZ16A-11	11	22.65	25.5	40	5.5	1.2	5.5
OZ16A-12	12	22.65	25.5	40	5.5	1.2	5.5
OZ16A-13	13	22.65	25.5	40	5.5	1.2	5.5
OZ16A-14	14	22.65	25.5	40	5.5	1.2	5.5
OZ16A-15	15	22.65	25.5	40	5.5	1.2	5.5
OZ16A-16	16	22.65	25.5	40	5.5	1.2	5.5
OZ20A-02	2	27.4	29.8	45	6	1.35	6
OZ20A-03	3	27.4	29.8	45	6	1.35	6
OZ20A-04	4	27.4	29.8	45	6	1.35	6
OZ20A-05	5	27.4	29.8	45	6	1.35	6
OZ20A-06	6	27.4	29.8	45	6	1.35	6
OZ20A-07	7	27.4	29.8	45	6	1.35	6
OZ20A-08	8	27.4	29.8	45	6	1.35	6
OZ20A-09	9	27.4	29.8	45	6	1.35	6
OZ20A-10	10	27.4	29.8	45	6	1.35	6
OZ20A-11	11	27.4	29.8	45	6	1.35	6
OZ20A-12	12	27.4	29.8	45	6	1.35	6
OZ20A-13	13	27.4	29.8	45	6	1.35	6
OZ20A-14	14	27.4	29.8	45	6	1.35	6
OZ20A-15	15	27.4	29.8	45	6	1.35	6
OZ20A-16	16	27.4	29.8	45	6	1.35	6
OZ20A-17	17	27.4	29.8	45	6	1.35	6
OZ20A-18	18	27.4	29.8	45	6	1.35	6
OZ20A-19	19	27.4	29.8	45	6	1.35	6
OZ20A-20	20	27.4	29.8	45	6	1.35	6

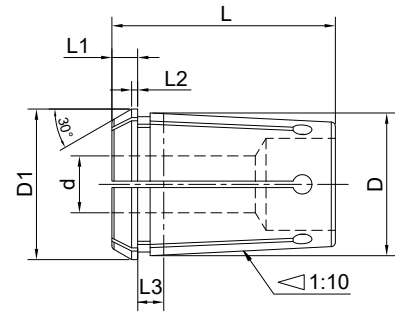
OZ Collet

OZ 筒夹 A 型



Size	d	D	D1	L	L1	L2	L3
OZ25A-02	2	32.9	35.05	52	6	1.4	6
OZ25A-03	3	32.9	35.05	52	6	1.4	6
OZ25A-04	4	32.9	35.05	52	6	1.4	6
OZ25A-05	5	32.9	35.05	52	6	1.4	6
OZ25A-06	6	32.9	35.05	52	6	1.4	6
OZ25A-07	7	32.9	35.05	52	6	1.4	6
OZ25A-08	8	32.9	35.05	52	6	1.4	6
OZ25A-09	9	32.9	35.05	52	6	1.4	6
OZ25A-10	10	32.9	35.05	52	6	1.4	6
OZ25A-11	11	32.9	35.05	52	6	1.4	6
OZ25A-12	12	32.9	35.05	52	6	1.4	6
OZ25A-13	13	32.9	35.05	52	6	1.4	6
OZ25A-14	14	32.9	35.05	52	6	1.4	6
OZ25A-15	15	32.9	35.05	52	6	1.4	6
OZ25A-16	16	32.9	35.05	52	6	1.4	6
OZ25A-17	17	32.9	35.05	52	6	1.4	6
OZ25A-18	18	32.9	35.05	52	6	1.4	6
OZ25A-19	19	32.9	35.05	52	6	1.4	6
OZ25A-20	20	32.9	35.05	52	6	1.4	6
OZ25A-21	21	32.9	35.05	52	6	1.4	6
OZ25A-22	22	32.9	35.05	52	6	1.4	6
OZ25A-23	23	32.9	35.05	52	6	1.4	6
OZ25A-24	24	32.9	35.05	52	6	1.4	6
OZ25A-25	25	32.9	35.05	52	6	1.4	6

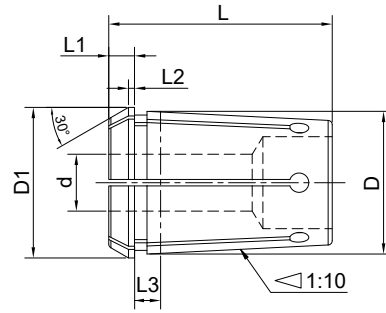
OZ Collet OZ 筒夹 A 型



Size	d	D	D1	L	L1	L2	L3
OZ32A-04	4	41.3	43.7	60	6	1.45	7
OZ32A-05	5	41.3	43.7	60	6	1.45	7
OZ32A-06	6	41.3	43.7	60	6	1.45	7
OZ32A-07	7	41.3	43.7	60	6	1.45	7
OZ32A-08	8	41.3	43.7	60	6	1.45	7
OZ32A-09	9	41.3	43.7	60	6	1.45	7
OZ32A-10	10	41.3	43.7	60	6	1.45	7
OZ32A-11	11	41.3	43.7	60	6	1.45	7
OZ32A-12	12	41.3	43.7	60	6	1.45	7
OZ32A-13	13	41.3	43.7	60	6	1.45	7
OZ32A-14	14	41.3	43.7	60	6	1.45	7
OZ32A-15	15	41.3	43.7	60	6	1.45	7
OZ32A-16	16	41.3	43.7	60	6	1.45	7
OZ32A-17	17	41.3	43.7	60	6	1.45	7
OZ32A-18	18	41.3	43.7	60	6	1.45	7
OZ32A-19	19	41.3	43.7	60	6	1.45	7
OZ32A-20	20	41.3	43.7	60	6	1.45	7
OZ32A-21	21	41.3	43.7	60	6	1.45	7
OZ32A-22	22	41.3	43.7	60	6	1.45	7
OZ32A-23	23	41.3	43.7	60	6	1.45	7
OZ32A-24	24	41.3	43.7	60	6	1.45	7
OZ32A-25	25	41.3	43.7	60	6	1.45	7
OZ32A-26	26	41.3	43.7	60	6	1.45	7
OZ32A-27	27	41.3	43.7	60	6	1.45	7
OZ32A-28	28	41.3	43.7	60	6	1.45	7
OZ32A-29	29	41.3	43.7	60	6	1.45	7
OZ32A-30	30	41.3	43.7	60	6	1.45	7
OZ32A-31	31	41.3	43.7	60	6	1.45	7
OZ32A-32	32	41.3	43.7	60	6	1.45	7

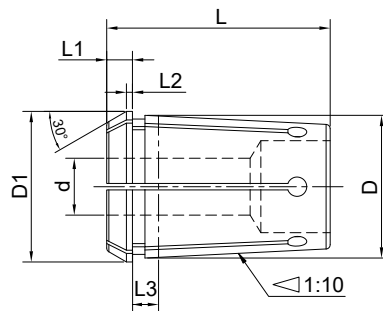
OZ Collet

OZ 筒夹 A 型



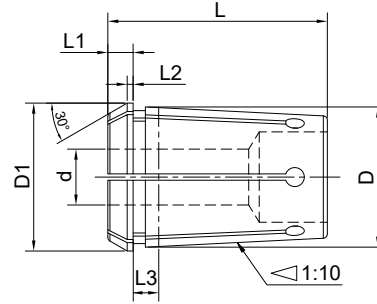
Size	d	D	D1	L	L1	L2	L3
OZ40A-06	6	49.7	52.2	68	6	1.45	8
OZ40A-07	7	49.7	52.2	68	6	1.45	8
OZ40A-08	8	49.7	52.2	68	6	1.45	8
OZ40A-09	9	49.7	52.2	68	6	1.45	8
OZ40A-10	10	49.7	52.2	68	6	1.45	8
OZ40A-11	11	49.7	52.2	68	6	1.45	8
OZ40A-12	12	49.7	52.2	68	6	1.45	8
OZ40A-13	13	49.7	52.2	68	6	1.45	8
OZ40A-14	14	49.7	52.2	68	6	1.45	8
OZ40A-15	15	49.7	52.2	68	6	1.45	8
OZ40A-16	16	49.7	52.2	68	6	1.45	8
OZ40A-17	17	49.7	52.2	68	6	1.45	8
OZ40A-18	18	49.7	52.2	68	6	1.45	8
OZ40A-19	19	49.7	52.2	68	6	1.45	8
OZ40A-20	20	49.7	52.2	68	6	1.45	8
OZ40A-21	21	49.7	52.2	68	6	1.45	8
OZ40A-22	22	49.7	52.2	68	6	1.45	8
OZ40A-23	23	49.7	52.2	68	6	1.45	8
OZ40A-24	24	49.7	52.2	68	6	1.45	8
OZ40A-25	25	49.7	52.2	68	6	1.45	8
OZ40A-26	26	49.7	52.2	68	6	1.45	8
OZ40A-27	27	49.7	52.2	68	6	1.45	8
OZ40A-28	28	49.7	52.2	68	6	1.45	8
OZ40A-29	29	49.7	52.2	68	6	1.45	8
OZ40A-30	30	49.7	52.2	68	6	1.45	8
OZ40A-31	31	49.7	52.2	68	6	1.45	8
OZ40A-32	32	49.7	52.2	68	6	1.45	8
OZ40A-33	33	49.7	52.2	68	6	1.45	8
OZ40A-34	34	49.7	52.2	68	6	1.45	8
OZ40A-35	35	49.7	52.2	68	6	1.45	8
OZ40A-36	36	49.7	52.2	68	6	1.45	8
OZ40A-37	37	49.7	52.2	68	6	1.45	8
OZ40A-38	38	49.7	52.2	68	6	1.45	8
OZ40A-39	39	49.7	52.2	68	6	1.45	8
OZ40A-40	40	49.7	52.2	68	6	1.45	8

OZ Collet OZ 筒夹 A 型



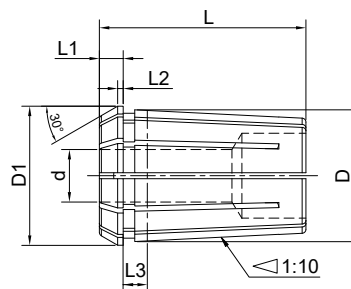
Size	d	D	D1	L	L1	L2	L3
OZ50A-08	8	61.1	63.8	80	7	1.55	9
OZ50A-09	9	61.1	63.8	80	7	1.55	9
OZ50A-10	10	61.1	63.8	80	7	1.55	9
OZ50A-11	11	61.1	63.8	80	7	1.55	9
OZ50A-12	12	61.1	63.8	80	7	1.55	9
OZ50A-13	13	61.1	63.8	80	7	1.55	9
OZ50A-14	14	61.1	63.8	80	7	1.55	9
OZ50A-15	15	61.1	63.8	80	7	1.55	9
OZ50A-16	16	61.1	63.8	80	7	1.55	9
OZ50A-17	17	61.1	63.8	80	7	1.55	9
OZ50A-18	18	61.1	63.8	80	7	1.55	9
OZ50A-19	19	61.1	63.8	80	7	1.55	9
OZ50A-20	20	61.1	63.8	80	7	1.55	9
OZ50A-21	21	61.1	63.8	80	7	1.55	9
OZ50A-22	22	61.1	63.8	80	7	1.55	9
OZ50A-23	23	61.1	63.8	80	7	1.55	9
OZ50A-24	24	61.1	63.8	80	7	1.55	9
OZ50A-25	25	61.1	63.8	80	7	1.55	9
OZ50A-26	26	61.1	63.8	80	7	1.55	9
OZ50A-27	27	61.1	63.8	80	7	1.55	9
OZ50A-28	28	61.1	63.8	80	7	1.55	9
OZ50A-29	29	61.1	63.8	80	7	1.55	9
OZ50A-30	30	61.1	63.8	80	7	1.55	9
OZ50A-31	31	61.1	63.8	80	7	1.55	9
OZ50A-32	32	61.1	63.8	80	7	1.55	9
OZ50A-33	33	61.1	63.8	80	7	1.55	9
OZ50A-34	34	61.1	63.8	80	7	1.55	9
OZ50A-35	35	61.1	63.8	80	7	1.55	9
OZ50A-36	36	61.1	63.8	80	7	1.55	9
OZ50A-37	37	61.1	63.8	80	7	1.55	9
OZ50A-38	38	61.1	63.8	80	7	1.55	9
OZ50A-39	39	61.1	63.8	80	7	1.55	9
OZ50A-40	40	61.1	63.8	80	7	1.55	9
OZ50A-41	41	61.1	63.8	80	7	1.55	9
OZ50A-42	42	61.1	63.8	80	7	1.55	9

OZ Collet OZ 筒夹 A 型



Size	d	D	D1	L	L1	L2	L3
OZ50A-43	43	61.1	63.8	80	7	1.55	9
OZ50A-44	44	61.1	63.8	80	7	1.55	9
OZ50A-45	45	61.1	63.8	80	7	1.55	9
OZ50A-46	46	61.1	63.8	80	7	1.55	9
OZ50A-47	47	61.1	63.8	80	7	1.55	9
OZ50A-48	48	61.1	63.8	80	7	1.55	9
OZ50A-49	49	61.1	63.8	80	7	1.55	9
OZ50A-50	50	61.1	63.8	80	7	1.55	9

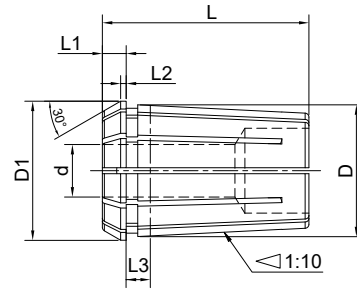
OZ Collet OZ 筒夹 B 型



Size	d	D	D1	L	L1	L2	L3
OZ16B-02	2	22.65	25.5	40	5.5	1.2	9.5
OZ16B-03	3	22.65	25.5	40	5.5	1.2	9.5
OZ16B-04	4	22.65	25.5	40	5.5	1.2	9.5
OZ16B-05	5	22.65	25.5	40	5.5	1.2	9.5
OZ16B-06	6	22.65	25.5	40	5.5	1.2	9.5
OZ16B-07	7	22.65	25.5	40	5.5	1.2	9.5
OZ16B-08	8	22.65	25.5	40	5.5	1.2	9.5
OZ16B-09	9	22.65	25.5	40	5.5	1.2	9.5
OZ16B-10	10	22.65	25.5	40	5.5	1.2	9.5
OZ16B-11	11	22.65	25.5	40	5.5	1.2	9.5
OZ16B-12	12	22.65	25.5	40	5.5	1.2	9.5
OZ16B-13	13	22.65	25.5	40	5.5	1.2	9.5
OZ16B-14	14	22.65	25.5	40	5.5	1.2	9.5
OZ16B-15	15	22.65	25.5	40	5.5	1.2	9.5
OZ16B-16	16	22.65	25.5	40	5.5	1.2	9.5
OZ20B-02	2	27.4	29.8	45	6	1.35	10
OZ20B-03	3	27.4	29.8	45	6	1.35	10
OZ20B-04	4	27.4	29.8	45	6	1.35	10
OZ20B-05	5	27.4	29.8	45	6	1.35	10
OZ20B-06	6	27.4	29.8	45	6	1.35	10
OZ20B-07	7	27.4	29.8	45	6	1.35	10
OZ20B-08	8	27.4	29.8	45	6	1.35	10
OZ20B-09	9	27.4	29.8	45	6	1.35	10
OZ20B-10	10	27.4	29.8	45	6	1.35	10
OZ20B-11	11	27.4	29.8	45	6	1.35	10
OZ20B-12	12	27.4	29.8	45	6	1.35	10
OZ20B-13	13	27.4	29.8	45	6	1.35	10
OZ20B-14	14	27.4	29.8	45	6	1.35	10
OZ20B-15	15	27.4	29.8	45	6	1.35	10
OZ20B-16	16	27.4	29.8	45	6	1.35	10
OZ20B-17	17	27.4	29.8	45	6	1.35	10
OZ20B-18	18	27.4	29.8	45	6	1.35	10
OZ20B-19	19	27.4	29.8	45	6	1.35	10
OZ20B-20	20	27.4	29.8	45	6	1.35	10

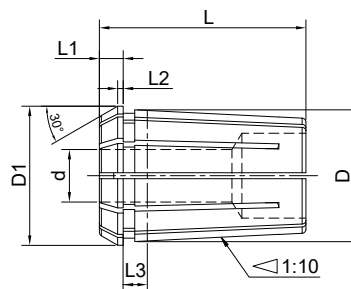
OZ Collet

OZ 筒夹 B 型



Size	d	D	D1	L	L1	L2	L3
OZ25B-02	2	32.9	35.05	52	6	1.4	10
OZ25B-03	3	32.9	35.05	52	6	1.4	10
OZ25B-04	4	32.9	35.05	52	6	1.4	10
OZ25B-05	5	32.9	35.05	52	6	1.4	10
OZ25B-06	6	32.9	35.05	52	6	1.4	10
OZ25B-07	7	32.9	35.05	52	6	1.4	10
OZ25B-08	8	32.9	35.05	52	6	1.4	10
OZ25B-09	9	32.9	35.05	52	6	1.4	10
OZ25B-10	10	32.9	35.05	52	6	1.4	10
OZ25B-11	11	32.9	35.05	52	6	1.4	10
OZ25B-12	12	32.9	35.05	52	6	1.4	10
OZ25B-13	13	32.9	35.05	52	6	1.4	10
OZ25B-14	14	32.9	35.05	52	6	1.4	10
OZ25B-15	15	32.9	35.05	52	6	1.4	10
OZ25B-16	16	32.9	35.05	52	6	1.4	10
OZ25B-17	17	32.9	35.05	52	6	1.4	10
OZ25B-18	18	32.9	35.05	52	6	1.4	10
OZ25B-19	19	32.9	35.05	52	6	1.4	10
OZ25B-20	20	32.9	35.05	52	6	1.4	10
OZ25B-21	21	32.9	35.05	52	6	1.4	10
OZ25B-22	22	32.9	35.05	52	6	1.4	10
OZ25B-23	23	32.9	35.05	52	6	1.4	10
OZ25B-24	24	32.9	35.05	52	6	1.4	10
OZ25B-25	25	32.9	35.05	52	6	1.4	10

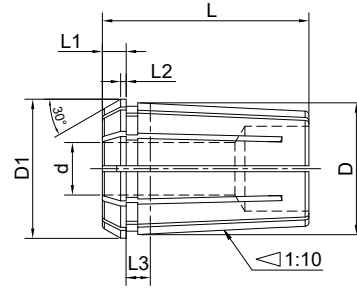
OZ Collet OZ 筒夹 B 型



Size	d	D	D1	L	L1	L2	L3
OZ32B-04	4	41.3	43.7	60	6	1.45	11
OZ32B-05	5	41.3	43.7	60	6	1.45	11
OZ32B-06	6	41.3	43.7	60	6	1.45	11
OZ32B-07	7	41.3	43.7	60	6	1.45	11
OZ32B-08	8	41.3	43.7	60	6	1.45	11
OZ32B-09	9	41.3	43.7	60	6	1.45	11
OZ32B-10	10	41.3	43.7	60	6	1.45	11
OZ32B-11	11	41.3	43.7	60	6	1.45	11
OZ32B-12	12	41.3	43.7	60	6	1.45	11
OZ32B-13	13	41.3	43.7	60	6	1.45	11
OZ32B-14	14	41.3	43.7	60	6	1.45	11
OZ32B-15	15	41.3	43.7	60	6	1.45	11
OZ32B-16	16	41.3	43.7	60	6	1.45	11
OZ32B-17	17	41.3	43.7	60	6	1.45	11
OZ32B-18	18	41.3	43.7	60	6	1.45	11
OZ32B-19	19	41.3	43.7	60	6	1.45	11
OZ32B-20	20	41.3	43.7	60	6	1.45	11
OZ32B-21	21	41.3	43.7	60	6	1.45	11
OZ32B-22	22	41.3	43.7	60	6	1.45	11
OZ32B-23	23	41.3	43.7	60	6	1.45	11
OZ32B-24	24	41.3	43.7	60	6	1.45	11
OZ32B-25	25	41.3	43.7	60	6	1.45	11
OZ32B-26	26	41.3	43.7	60	6	1.45	11
OZ32B-27	27	41.3	43.7	60	6	1.45	11
OZ32B-28	28	41.3	43.7	60	6	1.45	11
OZ32B-29	29	41.3	43.7	60	6	1.45	11
OZ32B-30	30	41.3	43.7	60	6	1.45	11
OZ32B-31	31	41.3	43.7	60	6	1.45	11
OZ32B-32	32	41.3	43.7	60	6	1.45	11

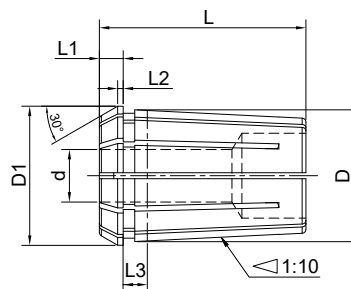
OZ Collet

OZ 筒夹 B 型



Size	d	D	D1	L	L1	L2	L3
OZ40B-06	6	49.7	52.2	68	6	1.45	12
OZ40B-07	7	49.7	52.2	68	6	1.45	12
OZ40B-08	8	49.7	52.2	68	6	1.45	12
OZ40B-09	9	49.7	52.2	68	6	1.45	12
OZ40B-10	10	49.7	52.2	68	6	1.45	12
OZ40B-11	11	49.7	52.2	68	6	1.45	12
OZ40B-12	12	49.7	52.2	68	6	1.45	12
OZ40B-13	13	49.7	52.2	68	6	1.45	12
OZ40B-14	14	49.7	52.2	68	6	1.45	12
OZ40B-15	15	49.7	52.2	68	6	1.45	12
OZ40B-16	16	49.7	52.2	68	6	1.45	12
OZ40B-17	17	49.7	52.2	68	6	1.45	12
OZ40B-18	18	49.7	52.2	68	6	1.45	12
OZ40B-19	19	49.7	52.2	68	6	1.45	12
OZ40B-20	20	49.7	52.2	68	6	1.45	12
OZ40B-21	21	49.7	52.2	68	6	1.45	12
OZ40B-22	22	49.7	52.2	68	6	1.45	12
OZ40B-23	23	49.7	52.2	68	6	1.45	12
OZ40B-24	24	49.7	52.2	68	6	1.45	12
OZ40B-25	25	49.7	52.2	68	6	1.45	12
OZ40B-26	26	49.7	52.2	68	6	1.45	12
OZ40B-27	27	49.7	52.2	68	6	1.45	12
OZ40B-28	28	49.7	52.2	68	6	1.45	12
OZ40B-29	29	49.7	52.2	68	6	1.45	12
OZ40B-30	30	49.7	52.2	68	6	1.45	12
OZ40B-31	31	49.7	52.2	68	6	1.45	12
OZ40B-32	32	49.7	52.2	68	6	1.45	12
OZ40B-33	33	49.7	52.2	68	6	1.45	12
OZ40B-34	34	49.7	52.2	68	6	1.45	12
OZ40B-35	35	49.7	52.2	68	6	1.45	12
OZ40B-36	36	49.7	52.2	68	6	1.45	12
OZ40B-37	37	49.7	52.2	68	6	1.45	12
OZ40B-38	38	49.7	52.2	68	6	1.45	12
OZ40B-39	39	49.7	52.2	68	6	1.45	12
OZ40B-40	40	49.7	52.2	68	6	1.45	12

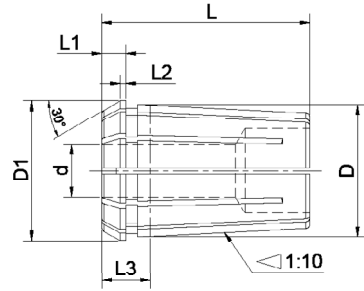
OZ Collet OZ 筒夹 B 型



Size	d	D	D1	L	L1	L2	L3
OZ50B-08	8	61.1	63.8	80	7	1.55	13
OZ50B-09	9	61.1	63.8	80	7	1.55	13
OZ50B-10	10	61.1	63.8	80	7	1.55	13
OZ50B-11	11	61.1	63.8	80	7	1.55	13
OZ50B-12	12	61.1	63.8	80	7	1.55	13
OZ50B-13	13	61.1	63.8	80	7	1.55	13
OZ50B-14	14	61.1	63.8	80	7	1.55	13
OZ50B-15	15	61.1	63.8	80	7	1.55	13
OZ50B-16	16	61.1	63.8	80	7	1.55	13
OZ50B-17	17	61.1	63.8	80	7	1.55	13
OZ50B-18	18	61.1	63.8	80	7	1.55	13
OZ50B-19	19	61.1	63.8	80	7	1.55	13
OZ50B-20	20	61.1	63.8	80	7	1.55	13
OZ50B-21	21	61.1	63.8	80	7	1.55	13
OZ50B-22	22	61.1	63.8	80	7	1.55	13
OZ50B-23	23	61.1	63.8	80	7	1.55	13
OZ50B-24	24	61.1	63.8	80	7	1.55	13
OZ50B-25	25	61.1	63.8	80	7	1.55	13
OZ50B-26	26	61.1	63.8	80	7	1.55	13
OZ50B-27	27	61.1	63.8	80	7	1.55	13
OZ50B-28	28	61.1	63.8	80	7	1.55	13
OZ50B-29	29	61.1	63.8	80	7	1.55	13
OZ50B-30	30	61.1	63.8	80	7	1.55	13
OZ50B-31	31	61.1	63.8	80	7	1.55	13
OZ50B-32	32	61.1	63.8	80	7	1.55	13
OZ50B-33	33	61.1	63.8	80	7	1.55	13
OZ50B-34	34	61.1	63.8	80	7	1.55	13
OZ50B-35	35	61.1	63.8	80	7	1.55	13
OZ50B-36	36	61.1	63.8	80	7	1.55	13
OZ50B-37	37	61.1	63.8	80	7	1.55	13
OZ50B-38	38	61.1	63.8	80	7	1.55	13
OZ50B-39	39	61.1	63.8	80	7	1.55	13
OZ50B-40	40	61.1	63.8	80	7	1.55	13
OZ50B-41	41	61.1	63.8	80	7	1.55	13
OZ50B-42	42	61.1	63.8	80	7	1.55	13

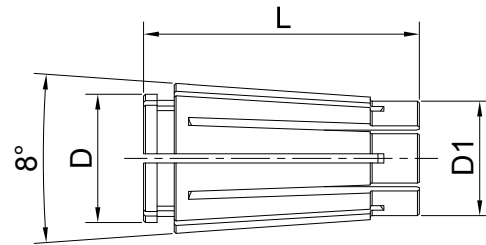
OZ Collet

OZ 筒夹 B 型



Size	d	D	D1	L	L1	L2	L3
OZ50B-43	43	61.1	63.8	80	7	1.55	13
OZ50B-44	44	61.1	63.8	80	7	1.55	13
OZ50B-45	45	61.1	63.8	80	7	1.55	13
OZ50B-46	46	61.1	63.8	80	7	1.55	13
OZ50B-47	47	61.1	63.8	80	7	1.55	13
OZ50B-48	48	61.1	63.8	80	7	1.55	13
OZ50B-49	49	61.1	63.8	80	7	1.55	13
OZ50B-50	50	61.1	63.8	80	7	1.55	13

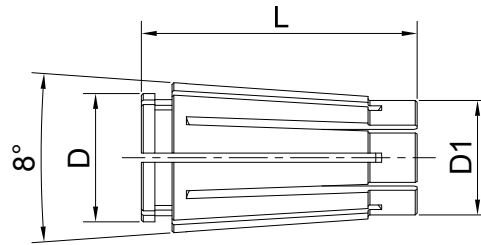
SKS Collet SKS 高速筒夹



Size	L	L1	L2	L3	D	d1	D1	d3	d4	d5
SKS06-02	25	17.4	3.8	2.4	9	10.4	7.5	6	7.8	9.964
SKS06-03	25	17.4	3.8	2.4	9	10.4	7.5	6	7.8	9.964
SKS06-04	25	17.4	3.8	2.4	9	10.4	7.5	6	7.8	9.964
SKS06-05	25	17.4	3.8	2.4	9	10.4	7.5	6	7.8	9.964
SKS06-06	25	17.4	3.8	2.4	9	10.4	7.5	6	7.8	9.964
SKS10-02	30.5	21.3	5	3	14	15.5	11.8	10	12	14.981
SKS10-03	30.5	21.3	5	3	14	15.5	11.8	10	12	14.981
SKS10-04	30.5	21.3	5	3	14	15.5	11.8	10	12	14.981
SKS10-05	30.5	21.3	5	3	14	15.5	11.8	10	12	14.981
SKS10-06	30.5	21.3	5	3	14	15.5	11.8	10	12	14.981
SKS10-07	30.5	21.3	5	3	14	15.5	11.8	10	12	14.981
SKS10-08	30.5	21.3	5	3	14	15.5	11.8	10	12	14.981
SKS10-09	30.5	21.3	5	3	14	15.5	11.8	10	12	14.981
SKS10-10	30.5	21.3	5	3	14	15.5	11.8	10	12	14.981
SKS16-02	45	32	8	3.8	21	24.5	18.8	16	19	23.939
SKS16-03	45	32	8	3.8	21	24.5	18.8	16	19	23.939
SKS16-04	45	32	8	3.8	21	24.5	18.8	16	19	23.939
SKS16-05	45	32	8	3.8	21	24.5	18.8	16	19	23.939
SKS16-06	45	32	8	3.8	21	24.5	18.8	16	19	23.939
SKS16-07	45	32	8	3.8	21	24.5	18.8	16	19	23.939
SKS16-08	45	32	8	3.8	21	24.5	18.8	16	19	23.939
SKS16-09	45	32	8	3.8	21	24.5	18.8	16	19	23.939
SKS16-10	45	32	8	3.8	21	24.5	18.8	16	19	23.939
SKS16-11	45	32	8	3.8	21	24.5	18.8	16	19	23.939
SKS16-12	45	32	8	3.8	21	24.5	18.8	16	19	23.939
SKS16-13	45	32	8	3.8	21	24.5	18.8	16	19	23.939
SKS16-14	45	32	8	3.8	21	24.5	18.8	16	19	23.939
SKS16-15	45	32	8	3.8	21	24.5	18.8	16	19	23.939
SKS16-16	45	32	8	3.8	21	24.5	18.8	16	19	23.939

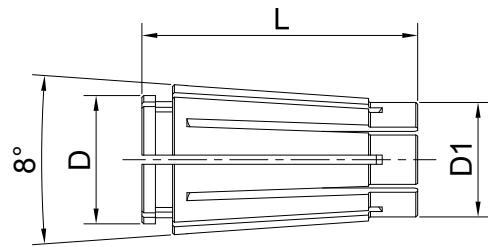
SKS Collet

SKS 高速筒夹



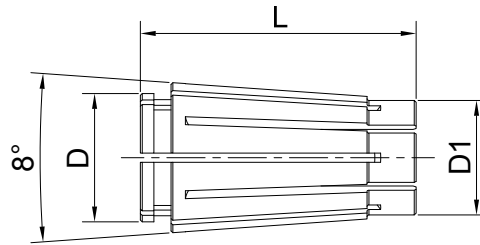
Size	L	L1	L2	L3	D	d1	d2	d3	d4
SKS06-02	25	17.5	3.5	2.5	8.6	10.5	7.5	6	7.8
SKS06-03	25	17.5	3.5	2.5	8.6	10.5	7.5	6	7.8
SKS06-04	25	17.5	3.5	2.5	8.6	10.5	7.5	6	7.8
SKS06-05	25	17.5	3.5	2.5	8.6	10.5	7.5	6	7.8
SKS06-06	25	17.5	3.5	2.5	8.6	10.5	7.5	6	7.8
SKS10-02	30.5	22	5	2.3	13.1	15.6	12	10	12
SKS10-03	30.5	22	5	2.3	13.1	15.6	12	10	12
SKS10-04	30.5	22	5	2.3	13.1	15.6	12	10	12
SKS10-05	30.5	22	5	2.3	13.1	15.6	12	10	12
SKS10-06	30.5	22	5	2.3	13.1	15.6	12	10	12
SKS10-07	30.5	22	5	2.3	13.1	15.6	12	10	12
SKS10-08	30.5	22	5	2.3	13.1	15.6	12	10	12
SKS10-09	30.5	22	5	2.3	13.1	15.6	12	10	12
SKS10-10	30.5	22	5	2.3	13.1	15.6	12	10	12
SKS13-02	39	28	5	2.5	18.5	20.1	17	13	15
SKS13-03	39	28	5	2.5	18.5	20.1	17	13	15
SKS13-04	39	28	5	2.5	18.5	20.1	17	13	15
SKS13-05	39	28	5	2.5	18.5	20.1	17	13	15
SKS13-06	39	28	5	2.5	18.5	20.1	17	13	15
SKS13-07	39	28	5	2.5	18.5	20.1	17	13	15
SKS13-08	39	28	5	2.5	18.5	20.1	17	13	15
SKS13-09	39	28	5	2.5	18.5	20.1	17	13	15
SKS13-10	39	28	5	2.5	18.5	20.1	17	13	15
SKS13-11	39	28	5	2.5	18.5	20.1	17	13	15
SKS13-12	39	28	5	2.5	18.5	20.1	17	13	15
SKS13-13	39	28	5	2.5	18.5	20.1	17	13	15

SKS Collet
SKS 高速筒夹



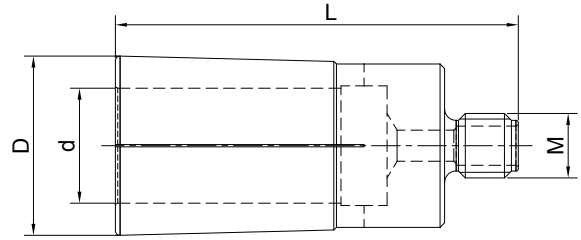
Size	L	L1	L2	L3	D	d1	d2	d3	d4
SKS16-03	45.5	32	8	2.8	20.5	24.45	15.3	18.6	18.8
SKS16-04	45.5	32	8	2.8	20.5	24.45	15.3	18.6	18.8
SKS16-05	45.5	32	8	2.8	20.5	24.45	15.3	18.6	18.8
SKS16-06	45.5	32	8	2.8	20.5	24.45	15.3	18.6	18.8
SKS16-07	45.5	32	8	2.8	20.5	24.45	15.3	18.6	18.8
SKS16-08	45.5	32	8	2.8	20.5	24.45	15.3	18.6	18.8
SKS16-09	45.5	32	8	2.8	20.5	24.45	15.3	18.6	18.8
SKS16-10	45.5	32	8	2.8	20.5	24.45	15.3	18.6	18.8
SKS16-11	45.5	32	8	2.8	20.5	24.45	15.3	18.6	18.8
SKS16-12	45.5	32	8	2.8	20.5	24.45	15.3	18.6	18.8
SKS16-13	45.5	32	8	2.8	20.5	24.45	15.3	18.6	18.8
SKS16-14	45.5	32	8	2.8	20.5	24.45	15.3	18.6	18.8
SKS16-15	45.5	32	8	2.8	20.5	24.45	15.3	18.6	18.8
SKS16-16	45.5	32	8	2.8	20.5	24.45	15.3	18.6	18.8
SKS20-03	54	41	8	2.8	24.8	29.05	19.5	22.8	22.55
SKS20-04	54	41	8	2.8	24.8	29.05	19.5	22.8	22.55
SKS20-05	54	41	8	2.8	24.8	29.05	19.5	22.8	22.55
SKS20-06	54	41	8	2.8	24.8	29.05	19.5	22.8	22.55
SKS20-07	54	41	8	2.8	24.8	29.05	19.5	22.8	22.55
SKS20-08	54	41	8	2.8	24.8	29.05	19.5	22.8	22.55
SKS20-09	54	41	8	2.8	24.8	29.05	19.5	22.8	22.55
SKS20-10	54	41	8	2.8	24.8	29.05	19.5	22.8	22.55
SKS20-11	54	41	8	2.8	24.8	29.05	19.5	22.8	22.55
SKS20-12	54	41	8	2.8	24.8	29.05	19.5	22.8	22.55
SKS20-13	54	41	8	2.8	24.8	29.05	19.5	22.8	22.55
SKS20-14	54	41	8	2.8	24.8	29.05	19.5	22.8	22.55
SKS20-15	54	41	8	2.8	24.8	29.05	19.5	22.8	22.55
SKS20-16	54	41	8	2.8	24.8	29.05	19.5	22.8	22.55
SKS20-17	54	41	8	2.8	24.8	29.05	19.5	22.8	22.55
SKS20-18	54	41	8	2.8	24.8	29.05	19.5	22.8	22.55
SKS20-19	54	41	8	2.8	24.8	29.05	19.5	22.8	22.55
SKS20-20	54	41	8	2.8	24.8	29.05	19.5	22.8	22.55

SKS Collet SKS 高速筒夹



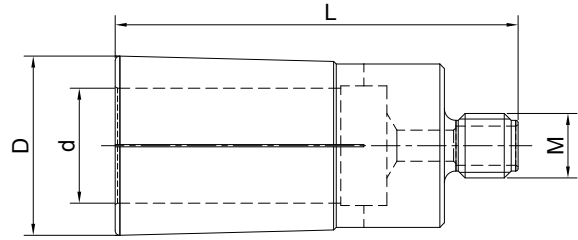
Size	L	L1	L2	L3	D	d1	d2	d3	d4
SKS25-03	57	43	8.5	2.9	29.9	35.6	28.8	25.4	28.2
SKS25-04	57	43	8.5	2.9	29.9	35.6	28.8	25.4	28.2
SKS25-05	57	43	8.5	2.9	29.9	35.6	28.8	25.4	28.2
SKS25-06	57	43	8.5	2.9	29.9	35.6	28.8	25.4	28.2
SKS25-08	57	43	8.5	2.9	29.9	35.6	28.8	25.4	28.2
SKS25-10	57	43	8.5	2.9	29.9	35.6	28.8	25.4	28.2
SKS25-12	57	43	8.5	2.9	29.9	35.6	28.8	25.4	28.2
SKS25-14	57	43	8.5	2.9	29.9	35.6	28.8	25.4	28.2
SKS25-16	57	43	8.5	2.9	29.9	35.6	28.8	25.4	28.2
SKS25-18	57	43	8.5	2.9	29.9	35.6	28.8	25.4	28.2
SKS25-20	57	43	8.5	2.9	29.9	35.6	28.8	25.4	28.2
SKS25-22	57	43	8.5	2.9	29.9	35.6	28.8	25.4	28.2
SKS25-24	57	43	8.5	2.9	29.9	35.6	28.8	25.4	28.2
SKS25-25	57	43	8.5	2.9	29.9	35.6	28.8	25.4	28.2

NDC Collet
NDC 后拉筒夹



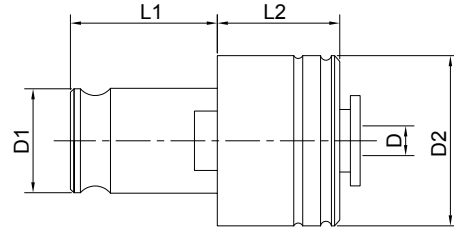
Size	d	D	L	M
NDC14	2-14			
NDC20	3-20	24.6	66	12
NDC25	16-25	39	87.5	14
NDC32	20-32	45.5	90	14

DC Collet DC 后拉筒夹



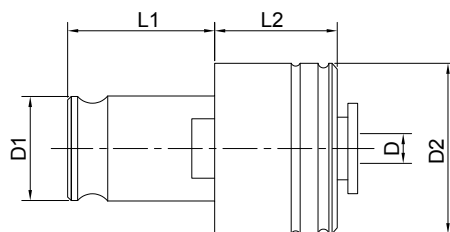
Size	d	D	L	l	M
DC04-02	2	7	31	10	M5*0.8P
DC04-03	3	7	31	14	M5*0.8P
DC04-04	4	7	31	14	M5*0.8P
DC06-03	3	9.6	14	14	M5*0.8P
DC06-04	4	9.6	36	14	M5*0.8P
DC06-05	5	9.6	36	16	M5*0.8P
DC06-06	6	9.6	36	16	M5*0.8P
DC08-03	3	15	45	15	M5*0.8P
DC08-04	4	15	45	16	M5*0.8P
DC08-06	6	15	45	24	M5*0.8P
DC08-08	8	15	45	26	M5*0.8P
DC10-03	3	19	52	15	M5*0.8P
DC10-04	4	19	52	18	M5*0.8P
DC10-06	6	19	52	24	M8*1.25P
DC10-08	8	19	52	26	M8*1.25P
DC10-10	10	19	52	30	M8*1.25P
DC12-04	4	22	60	15	M8*1.25P
DC12-06	6	22	60	25	M8*1.25P
DC12-08	8	22	60	30	M8*1.25P
DC12-10	10	22	60	33	M8*1.25P
DC12-12	12	22	60	33	M8*1.25P

Tapping Collet with Clutch 过载保护攻丝筒夹 (公制)



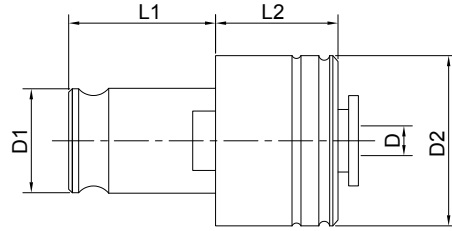
Size	Collet	M	D	□	D1	D2	L1	L2
FES1 M2(2.80x2.1)	FES 1	M2	2.8	2.1	19	33	21.5	25
FES1 M3(3.5*2.7)	FES 1	M3	3.5	2.7	19	33	21.5	25
FES1 M3.5(4*3)	FES 1	M3.5	4	3	19	33	21.5	25
FES1 M4(5*4)	FES 1	M4	5	4	19	33	21.5	25
FES1 M4(4.5*3.4)	FES 1	M4	4.5	3.4	19	33	21.5	25
FES1 M5(6*4.9)	FES 1	M5	6	4.9	19	33	21.5	25
FES1 M6(6.3*5)	FES 1	M6	6.3	5	19	33	21.5	25
FES1 M6(6*4.9)	FES 1	M6	6	4.9	19	33	21.5	25
FES1 M8(8*6.3)	FES 1	M8	8	6.3	19	33	21.5	25
FES1 M10(10*8)	FES 1	M10	10	8	19	33	21.5	25
FES1 M10(7*5.5)	FES 1	M10	7	5.5	19	33	21.5	25
FES1 M12(9*7.1)	FES 1	M12	9	7.1	19	33	21.5	25
FES1 M12(9*7)	FES 1	M12	9	7	19	33	21.5	25
FES1 M14(11*9)	FES 1	M14	11	9	19	33	21.5	25

Tapping Collet with Cluth 过载保护攻丝筒夹 (公制)



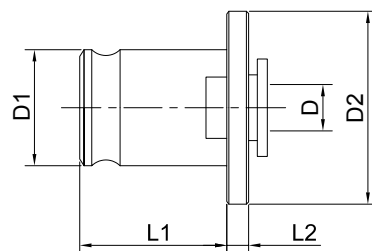
Size	Collet	M	D	□	D1	D2	L1	L2
FES2 M5(6*4.9)	FES 2	M5	6	4.9	31	51	35	35
FES2 M6(6.3*5)	FES 2	M6	6.3	5	31	51	35	35
FES2 M6(6*4.9)	FES 2	M6	6	4.9	31	51	35	35
FES2 M8(8*6.3)	FES 2	M8	8	6.3	31	51	35	35
FES2 M10(10*8)	FES 2	M10	10	8	31	51	35	35
FES2 M10(7*5.5)	FES 2	M10	7	5.5	31	51	35	35
FES2 M12(9*7.1)	FES 2	M12	9	7.1	31	51	35	35
FES2 M12(9*7)	FES 2	M12	9	7	31	51	35	35
FES2 M14(11*9)	FES 2	M14	11	9	31	51	35	35
FES2 M16(12.5*10)	FES 2	M16	12.5	10	31	51	35	35
FES2 M16(12*9)	FES 2	M16	12	9	31	51	35	35
FES2 M18(14*11)	FES 2	M18	14	11	31	51	35	35
FES2 M20(16*12)	FES 2	M20	16	12	31	51	35	35
FES2 M22(18*14.5)	FES 2	M22	18	14.5	31	51	35	35
FES2 M24(18*14.5)	FES 2	M24	18	14.5	31	51	35	35
FES2 M24(16*12.5)	FES 2	M24	16	12.5	31	51	35	35
FES3 M14(11*9)	FES 3	M14	11	9	48	73	55.5	45
FES3 M16(12*9)	FES 3	M16	12	9	48	73	55.5	45
FES3 M18(14*11)	FES 3	M18	14	11	48	73	55.5	45
FES3 M20(16*12)	FES 3	M20	16	12	48	73	55.5	45
FES3 M22(18*14.5)	FES 3	M22	18	14.5	48	73	55.5	45
FES3 M24(18*14.5)	FES 3	M24	18	14.5	48	73	55.5	45
FES3 M27(20*16)	FES 3	M27	20	16	48	73	55.5	45
FES3 M30(22*18)	FES 3	M30	22	18	48	73	55.5	45
FES3 M33(25*20)	FES 3	M33	25	20	48	73	55.5	45
FES3 M36(28*22)	FES 3	M36	28	22	48	73	55.5	45

Tapping Collet with Clutch 过载保护攻丝筒夹 (英制)



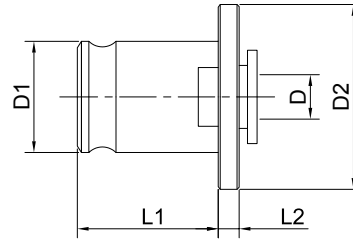
Size	Collet	ANSI	Metric	D	□	D1	D2	L1	L2
0-6" M1.6-M3.5	FES 1	0-6"	M1.6-M3.5	0.141	19	19	33	21.5	25
8, 5/32 M4	FES 1	8, 5/32	M4	0.168	19	19	33	21.5	25
10, 3/16" M4.5 M5	FES 1	10, 3/16"	M4.5 M5	0.194	19	19	33	21.5	25
12, 7/32"	FES 1	12, 7/32"		0.22	19	19	33	21.5	25
1/4" M6 M6.3	FES 1	1/4"	M6 M6.3	0.255	19	19	33	21.5	25
5/16" M7 M8	FES 1	5/16"	M7 M8	0.318	19	19	33	21.5	25
3/8" M10	FES 1	3/8"	M10	0.381	19	19	33	21.5	25
7/16" M11	FES 1	7/16"	M11	0.323	19	19	33	21.5	25
1/2" M12 M12.5	FES 1	1/2"	M12 M12.5	0.367	19	19	33	21.5	25
9/16" M14	FES 1	9/16"	M14	0.429	19	19	33	21.5	25
1/8" NPT	FES 1	1/8" NPT		0.437	19	19	33	21.5	25
5/16" M7 M8	FES 2	5/16"	M7 M8	0.318	31	31	51	35	35
3/8" M10	FES 2	3/8"	M10	0.381	31	31	51	35	35
7/16" M11	FES 2	7/16"	M11	0.323	31	31	51	35	35
1/2" M12 M12.5	FES 2	1/2"	M12 M12.5	0.367	31	31	51	35	35
9/16" M14	FES 2	9/16"	M14	0.429	31	31	51	35	35
5/8" M16	FES 2	5/8"	M16	0.48	31	31	51	35	35
11/16" M18	FES 2	11/16"	M18	0.542	31	31	51	35	35
3/4"	FES 2	3/4"		0.59	31	31	51	35	35
13/16" M20	FES 2	13/16"	M20	0.652	31	31	51	35	35
7/8" M22	FES 2	7/8"	M22	0.697	31	31	51	35	35
1/4" NPT	FES 2	1/4" NPT		0.562	31	31	51	35	35
3/8" NPT	FES 2	3/8" NPT		0.7	31	31	51	35	35
1/2" NPT	FES 2	1/2" NPT		0.687	31	31	51	35	35
13/16" M20	FES 3	13/16"	M20	0.652	48	48	73	55.5	45
7/8" M22	FES 3	7/8"	M22	0.697	48	48	73	55.5	45
15/16" M24	FES 3	15/16"	M24	0.76	48	48	73	55.5	45
1" M25	FES 3	1"	M25	0.8	48	48	73	55.5	45
1-1/8", 1-1/16" M27	FES 3	1-1/8", 1-1/16"	M27	0.896	48	48	73	55.5	45
1-1/4", 1-3/16 M30	FES 3	1-1/4", 1-3/16	M30	1.021	48	48	73	55.5	45
1-3/8", 1-5/16 M33	FES 3	1-3/8", 1-5/16	M33	1.108	48	48	73	55.5	45
1/2" NPT	FES 3	1/2" NPT		0.687	48	48	73	55.5	45
3/4" NPT	FES 3	3/4" NPT		0.906	48	48	73	55.5	45
1" NPT	FES 3	1" NPT		1.125	48	48	73	55.5	45

Tapping Collet without Clutch 无过载保护攻丝筒夹 (公制)



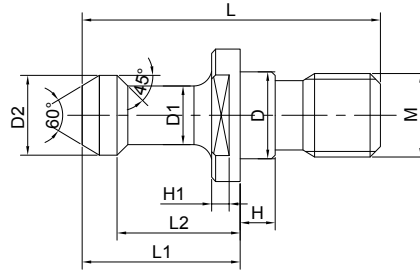
Size	Collet	M	D	□	D1	D2	L1	L2
FE1 M2(2.8*2.1)	FE 1	M2	2.8	2.1	19	30	21.5	7
FE1 M3(3.5*2.7)	FE 1	M3	3.5	2.7	19	30	21.5	7
FE1 M4(5*4)	FE 1	M4	5	4	19	30	21.5	7
FE1 M4(4.5*3.4)	FE 1	M4	4.5	3.4	19	30	21.5	7
FE1 M6(6*4.9)	FE 1	M6	6	4.9	19	30	21.5	7
FE1 M8(8*6.2)	FE 1	M8	8	6.2	19	30	21.5	7
FE1 M10(10*8)	FE 1	M10	10	8	19	30	21.5	7
FE1 M10(7*5.5)	FE 1	M10	7	5.5	19	30	21.5	7
FE1 M12(9*7)	FE 1	M12	9	7	19	30	21.5	7
FE2 M8(6*4.9)	FE 2	M8	6	4.9	31	48	35	11
FE2 M8(8*6.2)	FE 2	M8	8	6.2	31	48	35	11
FE2 M10(10*8)	FE 2	M10	10	8	31	48	35	11
FE2 M10(7*5.5)	FE 2	M10	7	5.5	31	48	35	11
FE2 M12(9*7.1)	FE 2	M12	9	7.1	31	48	35	11
FE2 M14(11*9)	FE 2	M14	11	9	31	48	35	11
FE2 M16(12*9)	FE 2	M16	12	9	31	48	35	11
FE2 M18(14*11)	FE 2	M18	14	11	31	48	35	11
FE2 M20(16*12)	FE 2	M20	16	12	31	48	35	11
FE3 M14(11*9)	FE 3	M14	11	9	48	70	55.5	13.5
FE3 M16(12*9)	FE 3	M16	12	9	48	70	55.5	13.5
FE3 M18(14*11)	FE 3	M18	14	11	48	70	55.5	13.5
FE3 M20(16*12)	FE 3	M20	16	12	48	70	55.5	13.5
FE3 M24(18*14.5)	FE 3	M24	18	14.5	48	70	55.5	13.5
FE3 M27(20*16)	FE 3	M27	20	16	48	70	55.5	13.5
FE3 M30(22*18)	FE 3	M30	22	18	48	70	55.5	13.5
FE3 M33(25*20)	FE 3	M33	25	20	48	70	55.5	13.5
FE3 M36(28*22)	FE 3	M36	28	22	48	70	55.5	13.5

Tapping Collet without Cluth 无过载保护攻丝筒夹 (英制)



Size	Collet	ANSI	Metric	D	□	D1	D2	L1	L2
0-6" M1.6-M3.5	FE 1	0-6"	M1.6-M3.5	0.141	0.11	19	30	21.5	7
8, 5/32 M4	FE 1	8, 5/32	M4	0.168	0.131	19	30	21.5	7
10, 3/16" M4.5 M5	FE 1	10, 3/16"	M4.5 M5	0.194	0.152	19	30	21.5	7
12, 7/32"	FE 1	12, 7/32"		0.22	0.165	19	30	21.5	7
1/4" M6 M6.3	FE 1	1/4"	M6 M6.3	0.255	0.191	19	30	21.5	7
5/16" M7 M8	FE 1	5/16"	M7 M8	0.318	0.238	19	30	21.5	7
3/8" M10	FE 1	3/8"	M10	0.381	0.286	19	30	21.5	7
7/16" M11	FE 1	7/16"	M11	0.323	0.242	19	30	21.5	7
1/2" M12 M12.5	FE 1	1/2"	M12 M12.5	0.367	0.275	19	30	21.5	7
9/16" M14	FE 1	9/16"	M14	0.429	0.322	19	30	21.5	7
1/8" NPT	FE 1	1/8" NPT	-	0.437	0.328	19	30	21.5	7
5/16" M7 M8	FE 2	5/16"	M7 M8	0.318	0.238	31	48	35	11
3/8" M10	FE 2	3/8"	M10	0.381	0.286	31	48	35	11
7/16" M11	FE 2	7/16"	M11	0.323	0.242	31	48	35	11
1/2" M12 M12.5	FE 2	1/2"	M12 M12.5	0.367	0.275	31	48	35	11
9/16" M14	FE 2	9/16"	M14	0.429	0.322	31	48	35	11
5/8" M16	FE 2	5/8"	M16	0.48	0.36	31	48	35	11
11/16" M18	FE 2	11/16"	M18	0.542	0.406	31	48	35	11
3/4"	FE 2	3/4"	-	0.59	0.442	31	48	35	11
13/16" M20	FE 2	13/16"	M20	0.652	0.489	31	48	35	11
7/8" M22	FE 2	7/8"	M22	0.697	0.523	31	48	35	11
1/4" NPT	FE 2	1/4" NPT	-	0.562	0.421	31	48	35	11
3/8" NPT	FE 2	3/8" NPT	-	0.7	0.531	31	48	35	11
1/2" NPT	FE 2	1/2" NPT	-	0.687	0.515	31	48	35	11
M20									
13/16" M20	FE 3	13/16"	M22	0.652	0.489	48	70	55.5	13.5
7/8" M22	FE 3	7/8"	M24	0.697	0.523	48	70	55.5	13.5
15/16" M24	FE 3	15/16"	M25	0.76	0.57	48	70	55.5	13.5
1" M25	FE 3	1"	M27	0.8	0.6	48	70	55.5	13.5
1-1/8", 1-1/16" M27	FE 3	1-1/8", 1-1/16"	M30	0.896	0.672	48	70	55.5	13.5
1-1/4", 1-3/16 M30	FE 3	1-1/4", 1-3/16	M33	1.021	0.766	48	70	55.5	13.5
1-3/8", 1-5/16 M33	FE 3	1-3/8", 1-5/16	-	1.108	0.831	48	70	55.5	13.5
1/2" NPT	FE 3	1/2" NPT	-	0.687	0.515	48	70	55.5	13.5
3/4" NPT	FE 3	3/4" NPT	-	0.906	0.678	48	70	55.5	13.5
1" NPT	FE 3	1" NPT	-	1.125	0.843	48	70	55.5	13.5

BT Pull Stud BT 拉钉



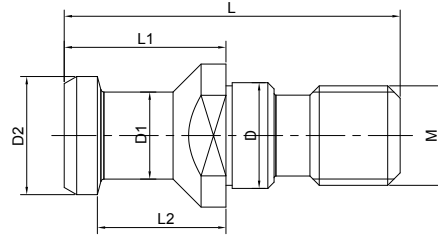
Size	D	D1	D2	M	L	L1	L2	H	H1	Ø
BT30-45	12.5	7	11	M12	43	23	18	4	3.5	45
BT30-60	12.5	7	11	M12	43	23	18	4	3.5	60
BT30-90	12.5	7	11	M12	43	23	18	4	3.5	90
BT40-45	17	10	15	M16	60	35	28	5	4	45
BT40-60	17	10	15	M16	60	35	28	5	4	60
BT40-90	17	10	15	M16	60	35	28	5	4	90
BT50-45	25	17	23	M24	85	45	35	8	8	45
BT50-60	25	17	23	M24	85	45	35	8	8	60
BT50-90	25	17	23	M24	85	45	35	8	8	90
BT30C-45	12.5	7	11	M12	43	23	18	4	3.5	45
BT30C-60	12.5	7	11	M12	43	23	18	4	3.5	60
BT30C-90	12.5	7	11	M12	43	23	18	4	3.5	90
BT40C-45	17	10	15	M16	60	35	28	5	4	45
BT40C-60	17	10	15	M16	60	35	28	5	4	60
BT40C-90	17	10	15	M16	60	35	28	5	4	90
BT50C-45	25	17	23	M24	85	45	35	8	8	45
BT50C-60	25	17	23	M24	85	45	35	8	8	60
BT50C-90	25	17	23	M24	85	45	35	8	8	90
BT30CO-45	12.5	7	11	M12	43	23	18	4	3.5	45
BT30CO-60	12.5	7	11	M12	43	23	18	4	3.5	60
BT30CO-90	12.5	7	11	M12	43	23	18	4	3.5	90
BT40CO-45	17	10	15	M16	60	35	28	5	4	45
BT40CO-60	17	10	15	M16	60	35	28	5	4	60
BT40CO-90	17	10	15	M16	60	35	28	5	4	90
BT50CO-45	25	17	23	M24	85	45	35	8	8	45
BT50CO-60	25	17	23	M24	85	45	35	8	8	60
BT50CO-90	25	17	23	M24	85	45	35	8	8	90

C: Through Hole

O: with O-Ring

Other sizes can be made by request.

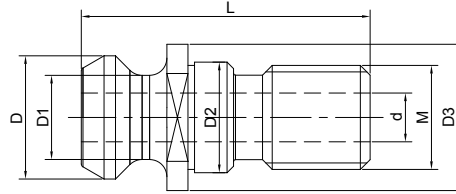
SK Pull Stud SK 拉钉



Size	D	D1	D2	M	L	L1	L2
SK-30A	13	9	13	M12	44	24	19
SK-40A	17	14	19	M16	54	26	20
SK-50A	25	21	28	M24	74	34	25
SK-30AO	13	9	13	M12	44	24	19
SK-40AO	17	14	19	M16	54	26	20
SK-50AO	25	21	28	M24	74	34	25
SK-30B	13	9	13	M12	44	24	19
SK-40B	17	14	19	M16	54	26	20
SK-50B	25	21	28	M24	74	34	25
SK-30BO	13	9	13	M12	44	24	19
SK-40BO	17	14	19	M16	54	26	20
SK-50BO	25	21	28	M24	74	34	25

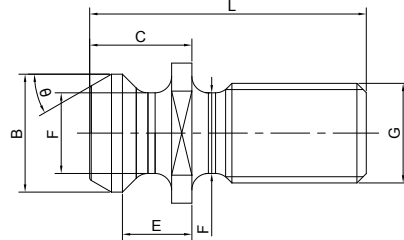
A: Through Hole, without O-Ring
 B: Not Through Hole, with O-Ring
 Other sizes can be made by request.

ISO 7388 Pull Stud ISO 7388 拉钉



Size	D3	D2	D1	D	M	L	d
ISO7388-40A	23	17	14	19	M16	54	7
ISO7388-50A	38	25	21	28	M24	74	10
ISO7388-40B	22.5	17	12.95	18.95	M16	44.4	7.35
ISO7388-50B	37	25	19.6	29.1	M24	66.55	11.55

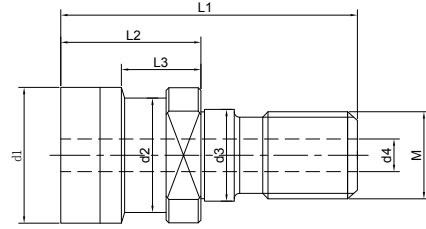
CAT Pull Stud CAT 拉钉



Size	Type	G	θ	L	B	C	E	F
CAT40-A	A	5/8"-11	45	1.5	0.74	0.64	0.44	0.49
CAT50-A	A	1"-8	45	2.3	1.14	1	0.7	0.82

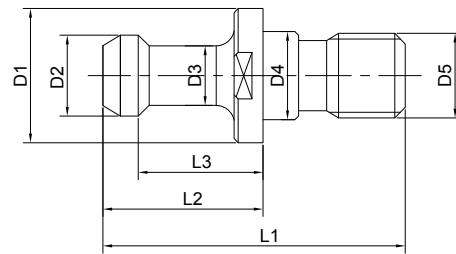
Size	Type	G	θ	L	B	C	E	F
BT-CAT40-45C	B	5/8"-11	45	2.25	0.59	1.266	0.99	0.394
BT-CAT40-45C	B	5/8"-11	45	2.25	0.59	1.266	0.99	0.394
BT-CAT50-90C	B	1"-8	45	3.094	0.906	1.771	1.378	0.669
BT-CAT50-90C	B	1"-8	90	3.094	0.906	1.771	1.378	0.669

OTT Pull Stud
OTT 拉杆



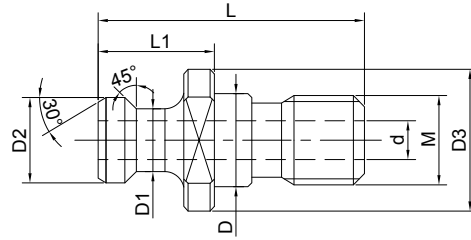
Size	M	d1	d2	d3	d4	l3	l2	l1
OTT40	M16	25	21.1	17	7	13.6	25.1	53
OTT50	M24	39.6	30.2	25	7	13.3	25.1	65.1

ISO Pull Stud
ISO 拉钉

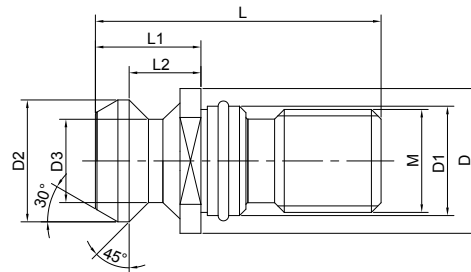


Size	L1	L2	L3	D1	D2	D3	D4	D5
ISO20	26	12	9	12	9	6	8.5	M8
ISO25	28	12	9	13	11	7	8.5	M8
ISO30	44	24	19	17	13	9	13	M12

Mazak Pull Stud 马扎克拉钉



Size	L	L1	D2	D1	D3	D	d	M
Mazak-BT40 C	44.1	19.1	18.8	12.45	22	17	7	M16
Mazak-BT50 C	65.2	25.2	29	20.83	37	25	10	M24
Mazak-BT40 CO	44.1	19.1	18.8	12.45	22	17	7	M16
Mazak-BT50 CO	65.2	25.2	29	20.83	37	25	10	M24



Size	D	D1	D2	D3	L	L1	L2	M
Mazak-CAT40 C	22	17	18.79	12.5	41.25	16.25	11.17	M16
Mazak-CAT50 C	35.6	25	28.95	20.82	65.4	25.4	17.78	M24
Mazak-CAT40 CO	22	17	18.79	12.5	41.25	16.25	11.17	M16
Mazak-CAT50 CO	35.6	25	28.95	20.82	65.4	25.4	17.78	M24

ER Nut
ER 压帽



UM

Size	D	d	L	M
ER16-UM	32	26	17.5	M22X1.5
ER20-UM	35	29	19	M25X1.5
ER25-UM	42	36	20	M32X1.5
ER32-UM	50	44	22.5	M40X1.5
ER40-UM	63	57	25.5	M50X1.5
ER50-UM	78	71	35.5	M64X2

Hex

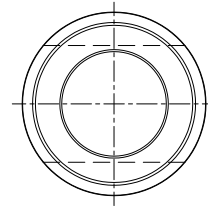
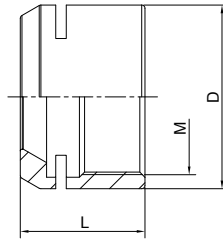
Size	D	d	L	M
ER11-A	19	17	11.3	M14X0.75
ER16-A	28	25	17.5	M22X1.5
ER20-A	34	30	19	M25X1.5

Mini

Size	D	d	L	M
ER8-M	12	10	10	M10X0.75
ER11-M	16	12	12	M13X0.75
ER16-M	22	17.2	18	M19X1
ER20-M	28	22.5	19	M24X1
ER25-M	35	28.6	20	M30X1

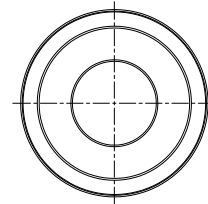
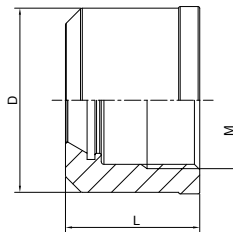
ER Nut

ER 压帽



MS

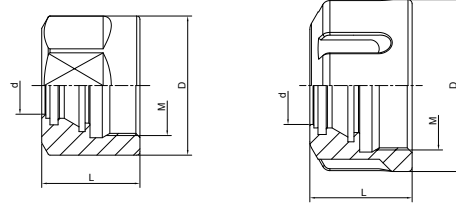
Size	D	L	M
ER11MS	16	12	M13*0.75
ER16MS	22	17	M19*1.0
ER20MS	28	19	M24*1.0
ER25MS	35	20	M30*1.0



GER

Size	D	L	M
GER16	27	19	TM22*1.5
GER20	30	22	TM26*1.5
GER25	40	25.9	TM32*1.5
GER32	48	24.5	TM40*1.5

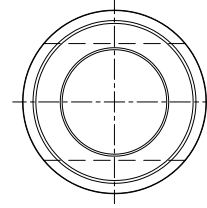
ER Sealed Nut
ERS 止水压帽



Sealed Nut

Size	D	d	L	M
ERS16	32	11	22.5	M22×1.5
ERS20	34	14	24	M25×1.5
ERS25	42	19	25	M32×1.5
ERS32	50	24	27.5	M40×1.5
ERS40	63	30	30.5	M50×1.5

Sealing Disc 止水垫圈



Size	d	D
ERS16-1	1	13
ERS16-2	2	13
ERS16-3	3	13
ERS16-4	4	13
ERS16-5	5	13
ERS16-6	6	13
ERS16-7	7	13
ERS16-8	8	13
ERS16-9	9	13
ERS16-10	10	13
ERS20-1	1	16
ERS20-2	2	16
ERS20-3	3	16
ERS20-4	4	16
ERS20-5	5	16
ERS20-6	6	16
ERS20-7	7	16
ERS20-8	8	16
ERS20-9	9	16
ERS20-10	10	16

Size	d	D
ERS20-11	11	16
ERS20-12	12	16
ERS20-13	13	16
ERS25-2	2	20.7
ERS25-3	3	20.7
ERS25-4	4	20.7
ERS25-5	5	20.7
ERS25-6	6	20.7
ERS25-7	7	20.7
ERS25-8	8	20.7
ERS25-9	9	20.7
ERS25-10	10	20.7
ERS25-11	11	20.7
ERS25-12	12	20.7
ERS25-13	13	20.7
ERS25-14	14	20.7
ERS25-15	15	20.7
ERS25-16	16	20.7
ERS32-2	2	27
ERS32-3	3	27

Sealing Disc 止水垫圈

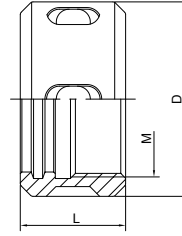


Size	d	D
ERS32-4	4	27
ERS32-5	5	27
ERS32-6	6	27
ERS32-7	7	27
ERS32-8	8	27
ERS32-9	9	27
ERS32-10	10	27
ERS32-11	11	27
ERS32-12	12	27
ERS32-13	13	27
ERS32-14	14	27
ERS32-15	15	27
ERS32-16	16	27
ERS32-17	17	27
ERS32-18	18	27
ERS32-19	19	27
ERS32-20	20	27
ERS40-3	3	33.5
ERS40-4	4	33.5
ERS40-5	5	33.5
ERS40-6	6	33.5
ERS40-7	7	33.5
ERS40-8	8	33.5

Size	d	D
ERS40-9	9	33.5
ERS40-10	10	33.5
ERS40-11	11	33.5
ERS40-12	12	33.5
ERS40-13	13	33.5
ERS40-14	14	33.5
ERS40-15	15	33.5
ERS40-16	16	33.5
ERS40-17	17	33.5
ERS40-18	18	33.5
ERS40-19	19	33.5
ERS40-20	20	33.5
ERS40-21	21	33.5
ERS40-22	22	33.5
ERS40-23	23	33.5
ERS40-24	24	33.5
ERS40-25	25	33.5
ERS40-26	26	33.5

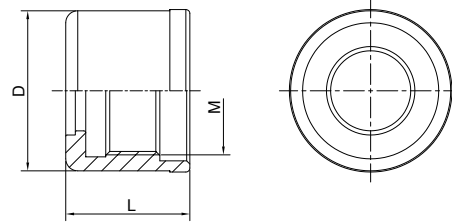
OZ Nut

OZ 压帽



Size	D	L	M
OZ6	18	14	M14X1.0
OZ8	26	19	M20X1.5
OZ10	30	19	M22X1.5
OZ12	35	20	M27X1.5
OZ16	43	24	M33X1.5
OZ20	50	28	M42X2.0
OZ25	60	30	M48X2.0
OZ32	72	33.5	M60X2.5
OZ40	85	37	M68X2.5
OZ50	100	43	M80X2.5

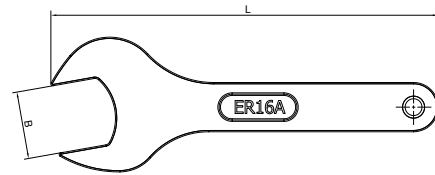
SKS Nut
SKS 无风阻压帽



Size	D	L	M
SKS06	19.5	21	M15.5*1.0
SKS10	27.1	24	M21.5*1.0
SKS16	40	31	M32*1.5
SKS20	48	24	M40*1
SKS25	55	37	M45*1.5

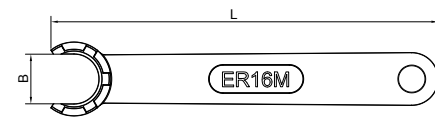
ER Spanner

ER 扳手



Hex

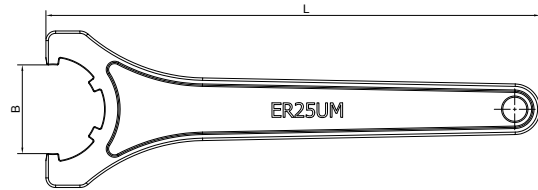
Size	B	L	Nut
ER11-A	17	110	ER11-A
ER16-A	25	120	ER16-A
ER20-A	30	130	ER20-A



Mini

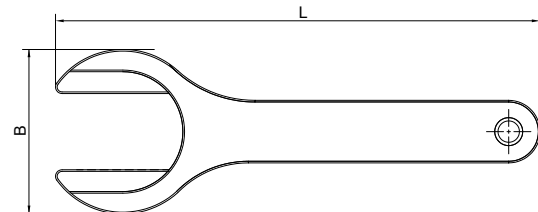
Size	B	L	Nut
ER8-M	12.9	70	ER8-M
ER11-M	16.7	90	ER11-M
ER16-M	22.4	110	ER16-M
ER20-M	28.9	120	ER20-M
ER25-M	35.8	130	ER25-M

ER Spanner
ER 扳手



UM

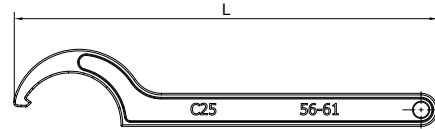
Size	B	L	Nut
ER16-UM	26	180	ER16-UM
ER20-UM	29	190	ER20-UM
ER25-UM	37	210	ER25-UM
ER32-UM	45	250	ER32-UM
ER40-UM	58	290	ER40-UM
ER50-UM	71	350	ER50-UM



MS

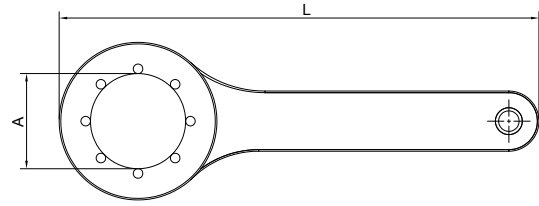
Size	B	L
ER8MS	19	76
ER11MS	10	100
ER16MS	15	130
ER20MS	18	160
ER25MS	23	200

Hook Spanner 勾头扳手



Size	L	Range
SC20	214	55-62
SC25	214	55-62
SC32	235	68-72
SC42	261	78-85

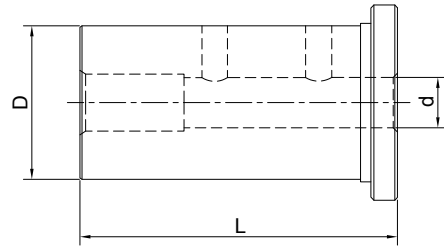
Ball Spanner
滚珠扳手



Size	A	L
SKS06-C19	19	150
SKS10-C27	27	150
SKS10-C30	30	150
SKS13-C35	35	170
SKS16-C40	40	180
SKS20-C48	48	210
SKS20-C55	55	260

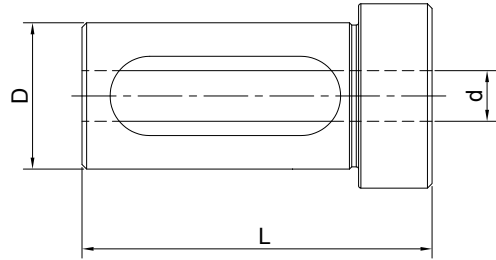
Reduction Sleeve for Boring Bar Holder

镗刀减径套



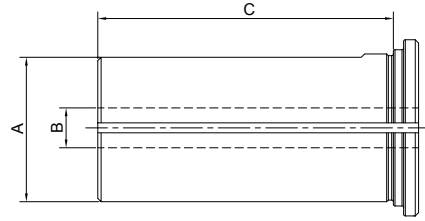
Size	d	D	L
SL25-06	6	25	46
SL25-08	8	25	46
SL25-10	10	25	46
SL25-12	12	25	46
SL32-06	6	32	56
SL32-08	8	32	56
SL32-10	10	32	56
SL32-12	12	32	56
SL40-06	6	40	71
SL40-08	8	40	71
SL40-10	10	40	71
SL40-12	12	40	71

Reduction Sleeve for Boring Bar Holder 镗刀减径套



Size	d	D	L
SL25-16	16	25	46
SL25-20	20	25	46
SL32-16	16	32	56
SL32-20	20	32	56
SL32-25	25	32	56
SL40-16	16	40	71
SL40-20	20	40	71
SL40-25	25	40	71
SL40-32	32	40	71

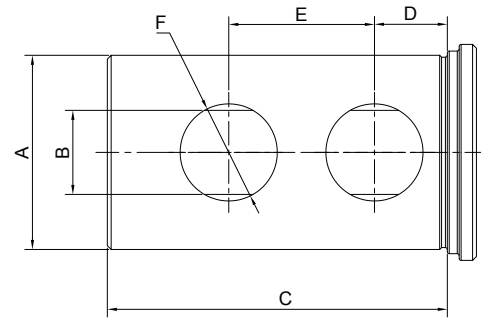
Tool Holder Bushing B Type 车床刀套 B 型



Size	A(OD)	B(ID)	C
B 3/4"-1/4	3/4"	1/4	1-1/2
B 3/4"-5/16	3/4"	5/16	1-1/2
B 3/4"-3/8	3/4"	3/8	1-1/2
B 3/4"-1/2	3/4"	1/2	1-1/2
B 1"-5/16	1"	5/16	1-3/4
B 1"-3/8	1"	3/8	1-3/4
B 1"-1/2	1"	1/2	1-3/4
B 1"-5/8	1"	5/8	1-3/4
B 1"-3/4	1"	3/4	1-3/4
B 1-1/4"-3/8	1-1/4"	3/8	2-1/8
B 1-1/4"-1/2	1-1/4"	1/2	2-1/8
B 1-1/4"-5/8	1-1/4"	5/8	2-1/8
B 1-1/4"-3/4	1-1/4"	3/4	2-1/8
B 1-1/4"-7/8	1-1/4"	7/8	2-1/8
B 1-1/4"-1	1-1/4"	1	2-1/8
B 1-1/2"-3/8	1-1/2"	3/8	2-1/2
B 1-1/2"-1/2	1-1/2"	1/2	2-1/2
B 1-1/2"-5/8	1-1/2"	5/8	2-1/2
B 1-1/2"-3/4	1-1/2"	3/4	2-1/2
B 1-1/2"-7/8	1-1/2"	7/8	2-1/2
B 1-1/2"-1	1-1/2"	1	2-1/2
B 1-1/2"-1-1/4	1-1/2"	1-1/4	2-1/2
B 1-3/4"-1/2	1-3/4"	1/2	3
B 1-3/4"-5/8	1-3/4"	5/8	3
B 1-3/4"-3/4	1-3/4"	3/4	3
B 1-3/4"-7/8	1-3/4"	7/8	3
B 1-3/4"-1	1-3/4"	1	3
B 1-3/4"-1-1/4	1-3/4"	1-1/4	3
B 1-3/4"- 1-1/2	1-3/4"	1-1/2	3

Size	A(OD)	B(ID)	C
B 2"-1/2	2"	1/2	3-1/2
B 2"-5/8	2"	5/8	3-1/2
B 2"-3/4	2"	3/4	3-1/2
B 2"-7/8	2"	7/8	3-1/2
B 2"-1	2"	1	3-1/2
B 2"-1-1/4	2"	1-1/4	3-1/2
B 2"-1-1/2	2"	1-1/2	3-1/2
B 2"-1-3/4	2"	1-3/4	3-1/2
B 2-1/2"-1/2	2-1/2"	1/2	4
B 2-1/2"-5/8	2-1/2"	5/8	4
B 2-1/2"-3/4	2-1/2"	3/4	4
B 2-1/2"-7/8	2-1/2"	7/8	4
B 2-1/2"-1	2-1/2"	1	4
B 2-1/2"-1-1/4	2-1/2"	1-1/4	4
B 2-1/2"-1-1/2	2-1/2"	1-1/2	4
B 2-1/2"-1-3/4	2-1/2"	1-3/4	4
B 2-1/2"-2	2-1/2"	2	4
B 2-1/2"-2-1/4	2-1/2"	2-1/4	4
B 3"-1	3"	1	4-1/2
B 3"-1-1/4	3"	1-1/4	4-1/2
B 3"-1-1/2	3"	1-1/2	4-1/2
B 3"-1-3/4	3"	1-3/4	4-1/2
B 3"-2	3"	2	4-1/2
B 3"-2-1/4	3"	2-1/4	4-1/2
B 3"-2-1/2	3"	2-1/2	4-1/2
B 3-1/2"-1	3-1/2"	1	5-1/4
B 3-1/2"-1-1/4	3-1/2"	1-1/4	5-1/4
B 3-1/2"-1-1/2	3-1/2"	1-1/2	5-1/4
B 3-1/2"-1-3/4	3-1/2"	1-3/4	5-1/4
B 3-1/2"-2	3-1/2"	2	5-1/4
B 3-1/2"-2-1/4	3-1/2"	2-1/4	5-1/4
B 3-1/2"-2-1/2	3-1/2"	2-1/2	5-1/4
B 3-1/2"- 3	3-1/2"	3	5-1/4

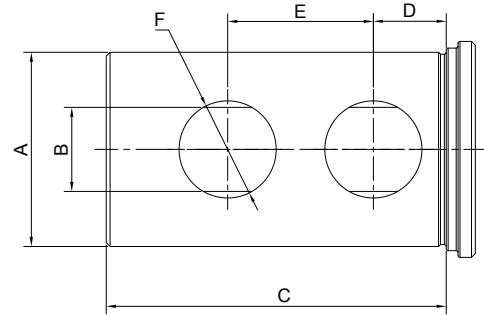
Tool Holder Bushing J Type 车床刀套 J 型



Size	A(OD)	B(ID)	C	D	E	F	Holes No.
J 3/4"-1/4	3/4"	1/4	1-1/2	3/9	13/16	3/8	2
J 3/4"- 5/16	3/4"	5/16	1-1/2	3/9	13/16	3/8	2
J 3/4"- 3/8	3/4"	3/8	1-1/2	3/9	13/16	3/8	2
J 3/4"-1/2	3/4"	1/2	1-1/2	3/9	13/16	3/8	2
J 1"-3/8	1"	3/8	1-3/4	7/16	7/8	5/8	2
J 1"-1/2	1"	1/2	1-3/4	7/16	7/8	5/8	2
J 1"- 5/8	1"	5/8	1-3/4	7/16	7/8	5/8	2
J 1"- 3/4	1"	3/4	1-3/4	7/16	7/8	5/8	2
J 1-1/4"-3/8	1-1/4"	3/8	2-1/8	5/8	1	3/4	2
J 1-1/4"-1/2	1-1/4"	1/2	2-1/8	5/8	1	3/4	2
J 1-1/4"-5/8	1-1/4"	5/8	2-1/8	5/8	1	3/4	2
J 1-1/4"-3/4	1-1/4"	3/4	2-1/8	5/8	1	3/4	2
J 1-1/4"- 7/8	1-1/4"	7/8	2-1/8	5/8	1	3/4	2
J 1-1/4"-1	1-1/4"	1	2-1/8	5/8	1	3/4	2
J 1-1/2"-3/8	1-1/2"	3/8	2-1/2	11/16	1-1/8	7/8	2
J 1-1/2"-1/2	1-1/2"	1/2	2-1/2	11/16	1-1/8	7/8	2
J 1-1/2"- 5/8	1-1/2"	5/8	2-1/2	11/16	1-1/8	7/8	2
J 1-1/2"-3/4	1-1/2"	3/4	2-1/2	11/16	1-1/8	7/8	2
J 1-1/2"-7/8	1-1/2"	7/8	2-1/2	11/16	1-1/8	7/8	2
J 1-1/2"-1	1-1/2"	1	2-1/2	11/16	1-1/8	7/8	2
J 1-1/2"-1-1/4	1-1/2"	1-1/4	2-1/2	11/16	1-1/8	7/8	2
J 1-3/4"-1/2	1-3/4"	1/2	3	3/4	1-1/4	7/8	2
J 1-3/4"- 5/8	1-3/4"	5/8	3	3/4	1-1/4	7/8	2
J 1-3/4"-3/4	1-3/4"	3/4	3	3/4	1-1/4	7/8	2
J 1-3/4"-7/8	1-3/4"	7/8	3	3/4	1-1/4	7/8	2
J 1-3/4"-1	1-3/4"	1	3	3/4	1-1/4	7/8	2
J 1-3/4"-1-1/4	1-3/4"	1-1/4	3	3/4	1-1/4	7/8	2
J 1-3/4"- 1-1/2	1-3/4"	1-1/2	3	3/4	1-1/4	7/8	2
J 2"-1/2	2"	1/2	3-1/2	3/4	1-1/2	1	2
J 2"-5/8	2"	5/8	3-1/2	3/4	1-1/2	1	2
J 2"-3/4	2"	3/4	3-1/2	3/4	1-1/2	1	2
J 2"-7/8	2"	7/8	3-1/2	3/4	1-1/2	1	2
J 2"-1	2"	1	3-1/2	3/4	1-1/2	1	2

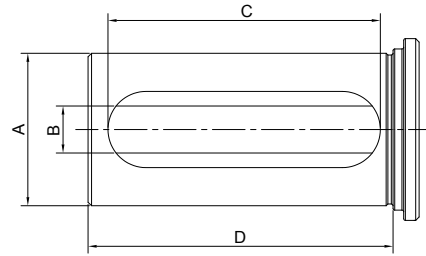
Tool Holder Bushing J Type

车床刀套 J 型



Size	A(OD)	B(ID)	C	D	E	F	Holes No.
J 2"- 1-1/4	2"	1-1/4	3-1/2	3/4	1-1/2	1	2
J 2"- 1-1/2	2"	1-1/2	3-1/2	3/4	1-1/2	1	2
J 2"-1-3/4	2"	1-3/4	3-1/2	3/4	1-1/2	1	2
J 2-1/2"-1/2	2-1/2"	1/2	4	7/8	1-3/4	1-1/4	2
J 2-1/2"-5/8	2-1/2"	5/8	4	7/8	1-3/4	1-1/4	2
J 2-1/2"-3/4	2-1/2"	3/4	4	7/8	1-3/4	1-1/4	2
J 2-1/2"-7/8	2-1/2"	7/8	4	7/8	1-3/4	1-1/4	2
J 2-1/2"-1	2-1/2"	1	4	7/8	1-3/4	1-1/4	2
J 2-1/2"-1-1/4	2-1/2"	1-1/4	4	7/8	1-3/4	1-1/4	2
J 2-1/2"-1-1/2	2-1/2"	1-1/2	4	7/8	1-3/4	1-1/4	2
J 2-1/2"-1-3/4	2-1/2"	1-3/4	4	7/8	1-3/4	1-1/4	2
J 2-1/2"-2	2-1/2"	2	4	7/8	1-3/4	1-1/4	2
J 2-1/2"-2-1/4	2-1/2"	2-1/4	4	7/8	1-3/4	1-1/4	2
J 3"-1	3"	1	4-1/2	1	2	1-1/4	4
J 3"-1-1/4	3"	1-1/4	4-1/2	1	2	1-1/4	4
J 3"-1-1/2	3"	1-1/2	4-1/2	1	2	1-1/4	4
J 3"-1-3/4	3"	1-3/4	4-1/2	1	2	1-1/4	4
J 3"- 2	3"	2	4-1/2	1	2	1-1/4	4
J 3"-2-1/4	3"	2-1/4	4-1/2	1	2	1-1/4	4
J 3"-2-1/2	3"	2-1/2	4-1/2	1	2	1-1/4	4
J 3-1/2"-1	3-1/2"	1	5-1/4	1-1/4	2-1/2	1-1/4	4
J 3-1/2"-1-1/4	3-1/2"	1-1/4	5-1/4	1-1/4	2-1/2	1-1/4	4
J 3-1/2"-1-1/2	3-1/2"	1-1/2	5-1/4	1-1/4	2-1/2	1-1/4	4
J 3-1/2"-1-3/4	3-1/2"	1-3/4	5-1/4	1-1/4	2-1/2	1-1/4	4
J 3-1/2"-2	3-1/2"	2	5-1/4	1-1/4	2-1/2	1-1/4	4
J 3-1/2"-2-1/4	3-1/2"	2-1/4	5-1/4	1-1/4	2-1/2	1-1/4	4
J 3-1/2"-2-1/2	3-1/2"	2-1/2	5-1/4	1-1/4	2-1/2	1-1/4	4
J 3-1/2"-3	3-1/2"	3	5-1/4	1-1/4	2-1/2	1-1/4	4

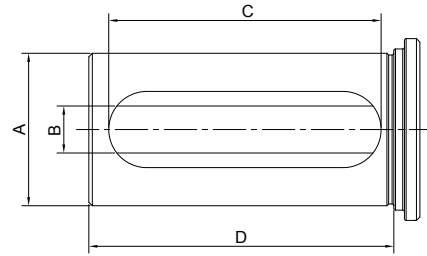
Tool Holder Bushing C Type 车床刀套 C 型



Size	A(OD)	B(ID)	C	D	Holes No.
C 3/4"-1/4	3/4"	1/4	1-1/2	2	1
C 3/4"-5/16	3/4"	5/16	1-1/2	2	1
C 3/4"-3/8	3/4"	3/8	1-1/2	2	1
C 3/4"-1/2	3/4"	1/2	1-1/2	2	1
C 1"-1/4	1"	1/4	2-3/8	2-3/4	1
C 1"-5/16	1"	5/16	2-3/8	2-3/4	1
C 1"-3/8	1"	3/8	2-3/8	2-3/4	1
C 1"-1/2	1"	1/2	2-3/8	2-3/4	1
C 1"-5/8	1"	5/8	2-3/8	2-3/4	1
C 1"-3/4	1"	3/4	2-3/8	2-3/4	1
C 1-1/4"-3/8	1-1/4"	3/8	2-3/4	3-1/4	1
C 1-1/4"- 1/2	1-1/4"	1/2	2-3/4	3-1/4	1
C 1-1/4"-5/8	1-1/4"	5/8	2-3/4	3-1/4	1
C 1-1/4"-3/4	1-1/4"	3/4	2-3/4	3-1/4	1
C 1-1/4"- 7/8	1-1/4"	7/8	2-3/4	3-1/4	1
C 1-1/4"-1	1-1/4"	1	2-3/4	3-1/4	1
C 1-1/2"-3/8	1-1/2"	3/8	3	3-3/8	1
C 1-1/2"-1/2	1-1/2"	1/2	3	3-3/8	1
C 1-1/2"-5/8	1-1/2"	5/8	3	3-3/8	1
C 1-1/2"-3/4	1-1/2"	3/4	3	3-3/8	1
C 1-1/2"-7/8	1-1/2"	7/8	3	3-3/8	1
C 1-1/2"- 1	1-1/2"	1	3	3-3/8	1
C 1-1/2"-1-1/4	1-1/2"	1-1/4	3	3-3/8	1
C 1-3/4"-1/2	1-3/4"	1/2	3-1/8	3-1/2	1
C 1-3/4"-5/8	1-3/4"	5/8	3-1/8	3-1/2	1
C 1-3/4"-3/4	1-3/4"	3/4	3-1/8	3-1/2	1
C 1-3/4"-7/8	1-3/4"	7/8	3-1/8	3-1/2	1
C 1-3/4"-1	1-3/4"	1	3-1/8	3-1/2	1
C 1-3/4"-1-1/4	1-3/4"	1-1/4	3-1/8	3-1/2	1
C 1-3/4"-1-1/2	1-3/4"	1-1/2	3-1/8	3-1/2	1
C 2"-1/2	2"	1/2	3-5/8	4	1
C 2"-5/8	2"	5/8	3-5/8	4	1
C 2"-3/4	2"	3/4	3-5/8	4	1
C 2"-1	2"	1	3-5/8	4	1

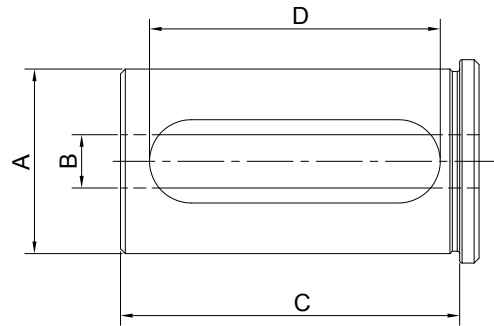
Tool Holder Bushing C Type

车床刀套 C 型



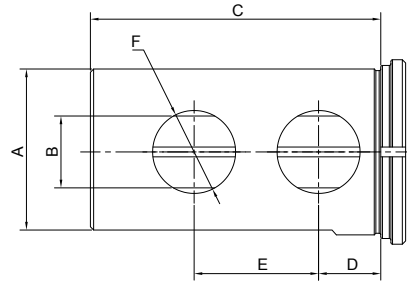
Size	A(OD)	B(ID)	C	D	Holes No.
C 2"-1-1/4	2"	1-1/4	3-5/8	4	1
C 2"- 1-1/2	2"	1-1/2	3-5/8	4	1
C 2"-1-3/4	2"	1-3/4	3-5/8	4	1
C 2-1/2"- 1/2	2-1/2"	1/2	4-1/8	4-1/2	1 or 2
C 2-1/2"- 5/8	2-1/2"	5/8	4-1/8	4-1/2	1 or 2
C 2-1/2"-3/4	2-1/2"	3/4	4-1/8	4-1/2	1 or 2
C 2-1/2"-7/8	2-1/2"	7/8	4-1/8	4-1/2	1 or 2
C 2-1/2"-1	2-1/2"	1	4-1/8	4-1/2	1 or 2
C 2-1/2"-1-1/4	2-1/2"	1-1/4	4-1/8	4-1/2	1 or 2
C 2-1/2"-1-1/2	2-1/2"	1-1/2	4-1/8	4-1/2	1 or 2
C 2-1/2"-1-3/4	2-1/2"	1-3/4	4-1/8	4-1/2	1 or 2
C 2-1/2"-2	2-1/2"	2	4-1/8	4-1/2	1 or 2
C 2-1/2"-2-1/4	2-1/2"	2-1/4	4-1/8	4-1/2	1 or 2
C 3"-1	3"	1	4-5/8	5	1 or 2
C 3"-1-1/4	3"	1-1/4	4-5/8	5	1 or 2
C 3"-1-1/2	3"	1-1/2	4-5/8	5	1 or 2
C 3"-1-3/4	3"	1-3/4	4-5/8	5	1 or 2
C 3"-2	3"	2	4-5/8	5	1 or 2
C 3"-2-1/4	3"	2-1/4	4-5/8	5	1 or 2
C 3"-2-1/2	3"	2-1/2	4-5/8	5	1 or 2
C 3-1/2"-1	3-1/2"	1	5	5-3/4	1 or 2
C 3-1/2"-1-1/4	3-1/2"	1-1/4	5	5-3/4	1 or 2
C 3-1/2"-1-1/2	3-1/2"	1-1/2	5	5-3/4	1 or 2
C 3-1/2"-1-3/4	3-1/2"	1-3/4	5	5-3/4	1 or 2
C 3-1/2"-2	3-1/2"	2	5	5-3/4	1 or 2
C 3-1/2"-2-1/4	3-1/2"	2-1/4	5	5-3/4	1 or 2
C 3-1/2"-2-1/2	3-1/2"	2-1/2	5	5-3/4	1 or 2
C 3-1/2"-3	3-1/2"	3	5	5-3/4	1 or 2

Tool Holder Bushing CV Type 车床刀套 CV 型



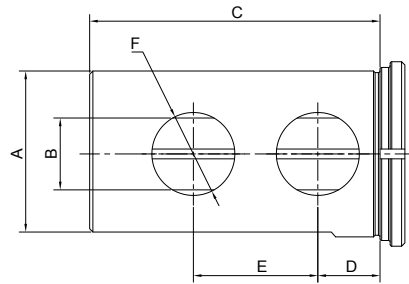
Size	A(OD)	B(ID)	C	D
CV 1-1/4"-1/4	1-1/4"	1/4	2.36(60mm)	1.97(50mm)
CV 1-1/4"-3/8	1-1/4"	3/8	2.36(60mm)	1.97(50mm)
CV 1-1/4"-1/2	1-1/4"	1/2	2.36(60mm)	1.97(50mm)
CV 1-1/4"-5/8	1-1/4"	5/8	2.36(60mm)	1.97(50mm)
CV 1-1/4"-3/4	1-1/4"	3/4	2.36(60mm)	1.97(50mm)
CV 1-1/4"-7/8	1-1/4"	7/8	2.36(60mm)	1.97(50mm)
CV 1-1/4"-1	1-1/4"	1	2.36(60mm)	1.97(50mm)
CV 1-1/2"-1/4	1-1/2"	1/4	2.76(70mm)	2.36(60mm)
CV 1-1/2"-3/8	1-1/2"	3/8	2.76(70mm)	2.36(60mm)
CV 1-1/2"-1/2	1-1/2"	1/2	2.76(70mm)	2.36(60mm)
CV 1-1/2"-5/8	1-1/2"	5/8	2.76(70mm)	2.36(60mm)
CV 1-1/2"-3/4	1-1/2"	3/4	2.76(70mm)	2.36(60mm)
CV 1-1/2"-7/8	1-1/2"	7/8	2.76(70mm)	2.36(60mm)
CV 1-1/2"-1	1-1/2"	1	2.76(70mm)	2.36(60mm)
CV 1-1/2"-1-1/4	1-1/2"	1-1/4	2.76(70mm)	2.36(60mm)

Tool Holder Bushing DD Type 车床刀套 DD 型



Size	A(OD)	B(ID)	C	D	E	F	Holes No.
DD 1-1/2"-3/8	1-1/2"	3/8	2-1/2	11/16	1-1/8	7/8	2
DD 1-1/2"-1/2	1-1/2"	1/2	2-1/2	11/16	1-1/8	7/8	2
DD 1-1/2"-5/8	1-1/2"	5/8	2-1/2	11/16	1-1/8	7/8	2
DD 1-1/2"-3/4	1-1/2"	3/4	2-1/2	11/16	1-1/8	7/8	2
DD 1-1/2"-7/8	1-1/2"	7/8	2-1/2	11/16	1-1/8	7/8	2
DD 1-1/2"-1	1-1/2"	1	2-1/2	11/16	1-1/8	7/8	2
DD 1-1/2"-1-1/4	1-1/2"	1-1/4	2-1/2	11/16	1-1/8	7/8	2
DD 1-3/4"-1/2	1-3/4"	1/2	3	3/4	1-1/4	7/8	2
DD 1-3/4"-5/8	1-3/4"	5/8	3	3/4	1-1/4	7/8	2
DD 1-3/4"-3/4	1-3/4"	3/4	3	3/4	1-1/4	7/8	2
DD 1-3/4"-7/8	1-3/4"	7/8	3	3/4	1-1/4	7/8	2
DD 1-3/4"-1	1-3/4"	1	3	3/4	1-1/4	7/8	2
DD 1-3/4"-1-1/4	1-3/4"	1-1/4	3	3/4	1-1/4	7/8	2
DD 1-3/4"-1-1/2	1-3/4"	1-1/2	3	3/4	1-1/4	7/8	2
DD 2"-1/2	2"	1/2	3-1/2	3/4	1-1/2	1	2
DD 2"-5/8	2"	5/8	3-1/2	3/4	1-1/2	1	2
DD 2"-3/4	2"	3/4	3-1/2	3/4	1-1/2	1	2
DD 2"-7/8	2"	7/8	3-1/2	3/4	1-1/2	1	2
DD 2"-1	2"	1	3-1/2	3/4	1-1/2	1	2
DD 2"-1-1/4	2"	1-1/4	3-1/2	3/4	1-1/2	1	2
DD 2"-1-1/2	2"	1-1/2	3-1/2	3/4	1-1/2	1	2
DD 2"-1-3/4	2"	1-3/4	3-1/2	3/4	1-1/2	1	2
DD 2-1/2"-1/2	2-1/2"	1/2	4	7/8	1-3/4	1-1/4	2
DD 2-1/2"-5/8	2-1/2"	5/8	4	7/8	1-3/4	1-1/4	2
DD 2-1/2"-3/4	2-1/2"	3/4	4	7/8	1-3/4	1-1/4	2
DD 2-1/2"-7/8	2-1/2"	7/8	4	7/8	1-3/4	1-1/4	2
DD 2-1/2"-1	2-1/2"	1	4	7/8	1-3/4	1-1/4	2
DD 2-1/2"-1-1/4	2-1/2"	1-1/4	4	7/8	1-3/4	1-1/4	2
DD 2-1/2"-1-1/2	2-1/2"	1-1/2	4	7/8	1-3/4	1-1/4	2
DD 2-1/2"-1-3/4	2-1/2"	1-3/4	4	7/8	1-3/4	1-1/4	2
DD 2-1/2"-2	2-1/2"	2	4	7/8	1-3/4	1-1/4	2
DD 2-1/2"-2-1/4	2-1/2"	2-1/4	4	7/8	1-3/4	1-1/4	2

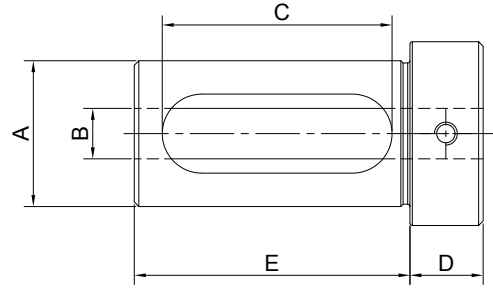
Tool Holder Bushing DD Type 车床刀套 DD 型



Size	A(OD)	B(ID)	C	D	E	F	Holes No.
DD 3"-1	3"	1	4-1/2	1	2	1-1/4	4
DD 3"-1-1/4	3"	1-1/4	4-1/2	1	2	1-1/4	4
DD 3"-1-1/2	3"	1-1/2	4-1/2	1	2	1-1/4	4
DD 3"-1-3/4	3"	1-3/4	4-1/2	1	2	1-1/4	4
DD 3"-2	3"	2	4-1/2	1	2	1-1/4	4
DD 3"-2-1/4	3"	2-1/4	4-1/2	1	2	1-1/4	4
DD 3"-2-1/2	3"	2-1/2	4-1/2	1	2	1-1/4	4
DD 3-1/2"-1	3-1/2"	1	5-1/4	1-1/4	2-1/2	1-1/4	4
DD 3-1/2"-1-1/4	3-1/2"	1-1/4	5-1/4	1-1/4	2-1/2	1-1/4	4
DD 3-1/2"-1-1/2	3-1/2"	1-1/2	5-1/4	1-1/4	2-1/2	1-1/4	4
DD 3-1/2"-1-3/4	3-1/2"	1-3/4	5-1/4	1-1/4	2-1/2	1-1/4	4
DD 3-1/2"-2	3-1/2"	2	5-1/4	1-1/4	2-1/2	1-1/4	4
DD 3-1/2"-2-1/4	3-1/2"	2-1/4	5-1/4	1-1/4	2-1/2	1-1/4	4
DD 3-1/2"-2-1/2	3-1/2"	2-1/2	5-1/4	1-1/4	2-1/2	1-1/4	4
DD 3-1/2"-3	3-1/2"	3	5-1/4	1-1/4	2-1/2	1-1/4	4

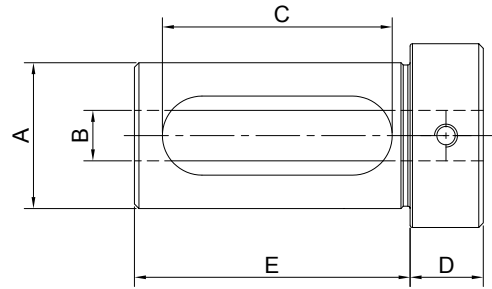
Tool Holder Bushing Z Type

车床刀套 Z 型



Size	A(OD)	B(ID)	C	D	Holes No.
Z 3/4"-1/4	3/4"	1/4	2-3/8	1/2	2-1/2
Z 3/4"-5/16	3/4"	5/16	2-3/8	1/2	2-1/2
Z 3/4"-3/8	3/4"	3/8	2-3/8	1/2	2-1/2
Z 3/4"-1/2	3/4"	1/2	2-3/8	1/2	2-1/2
Z 1"-1/4	1"	1/4	2-3/8	1/2	2-3/4
Z 1"-5/16	1"	5/16	2-3/8	1/2	2-3/4
Z 1"-3/8	1"	3/8	2-3/8	1/2	2-3/4
Z 1"-1/2	1"	1/2	2-3/8	1/2	2-3/4
Z 1"-5/8	1"	5/8	2-3/8	1/2	2-3/4
Z 1"-3/4	1"	3/4	2-3/8	1/2	2-3/4
Z 1-1/4"-3/8	1-1/4"	3/8	2-5/8	5/8	3
Z 1-1/4"-1/2	1-1/4"	1/2	2-5/8	5/8	3
Z 1-1/4"-5/8	1-1/4"	5/8	2-5/8	5/8	3
Z 1-1/4"-3/4	1-1/4"	3/4	2-5/8	5/8	3
Z 1-1/4"-7/8	1-1/4"	7/8	2-5/8	5/8	3
Z 1-1/4"-1	1-1/4"	1	2-5/8	5/8	3
Z 1-1/2"-3/8	1-1/2"	3/8	2-7/8	3/4	3-1/4
Z 1-1/2"-1/2	1-1/2"	1/2	2-7/8	3/4	3-1/4
Z 1-1/2"-5/8	1-1/2"	5/8	2-7/8	3/4	3-1/4
Z 1-1/2"-3/4	1-1/2"	3/4	2-7/8	3/4	3-1/4
Z 1-1/2"-7/8	1-1/2"	7/8	2-7/8	3/4	3-1/4
Z 1-1/2"-1	1-1/2"	1	2-7/8	3/4	3-1/4
Z 1-1/2"-1-1/4	1-1/2"	1-1/4	2-7/8	3/4	3-1/4
Z 1-3/4"-1/2	1-3/4"	1/2	3-1/8	3/4	3-1/2
Z 1-3/4"-5/8	1-3/4"	5/8	3-1/8	3/4	3-1/2
Z 1-3/4"-3/4	1-3/4"	3/4	3-1/8	3/4	3-1/2
Z 1-3/4"-7/8	1-3/4"	7/8	3-1/8	3/4	3-1/2
Z 1-3/4"-1	1-3/4"	1	3-1/8	3/4	3-1/2
Z 1-3/4"-1-1/4	1-3/4"	1-1/4	3-1/8	3/4	3-1/2
Z 1-3/4"-1-1/2	1-3/4"	1-1/2	3-1/8	3/4	3-1/2
Z 2"-1/2	2"	1/2	3-1/2	3/4	3-3/4
Z 2"-5/8	2"	5/8	3-1/2	3/4	3-3/4
Z 2"-3/4	2"	3/4	3-1/2	3/4	3-3/4
Z 2"-7/8	2"	7/8	3-1/2	3/4	3-3/4

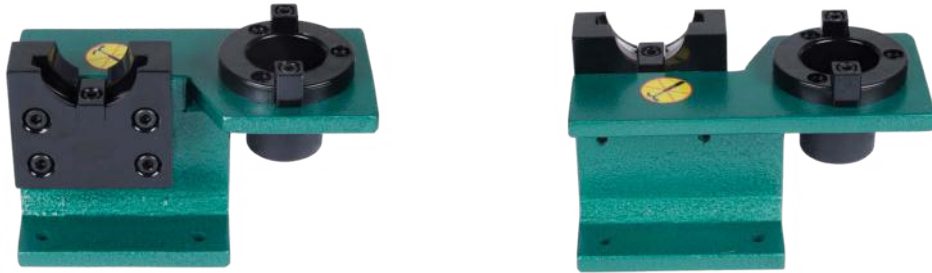
Tool Holder Bushing Z Type 车床刀套 Z 型



Size	A(OD)	B(ID)	C	D	Holes No.
Z 2"-1	2"	1	3-1/2	3/4	3-3/4
Z 2"-1-1/4	2"	1-1/4	3-1/2	3/4	3-3/4
Z 2"-1-1/2	2"	1-1/2	3-1/2	3/4	3-3/4
Z 2"-1-3/4	2"	1-3/4	3-1/2	3/4	3-3/4
Z 2-1/2"-5/8	2-1/2"	5/8	3-7/8	3/4	4-1/4
Z 2-1/2"-3/4	2-1/2"	3/4	3-7/8	3/4	4-1/4
Z 2-1/2"-7/8	2-1/2"	7/8	3-7/8	3/4	4-1/4
Z 2-1/2"-1	2-1/2"	1	3-7/8	3/4	4-1/4
Z 2-1/2"-1-1/4	2-1/2"	1-1/4	3-7/8	3/4	4-1/4
Z 2-1/2"-1-1/2	2-1/2"	1-1/2	3-7/8	3/4	4-1/4
Z 2-1/2"-1-3/4	2-1/2"	1-3/4	3-7/8	3/4	4-1/4
Z 2-1/2"-2	2-1/2"	2	3-7/8	3/4	4-1/4
Z 2-1/2"-2-1/4	2-1/2"	2-1/4	3-7/8	3/4	4-1/4
Z 3"-1	3"	1	4-3/8	3/4	4-3/4
Z 3"-1-1/4	3"	1-1/4	4-3/8	3/4	4-3/4
Z 3"-1-1/2	3"	1-1/2	4-3/8	3/4	4-3/4
Z 3"-1-3/4	3"	1-3/4	4-3/8	3/4	4-3/4
Z 3"-2	3"	2	4-3/8	3/4	4-3/4
Z 3"-2-1/4	3"	2-1/4	4-3/8	3/4	4-3/4
Z 3"-2-1/2	3"	2-1/2	4-3/8	3/4	4-3/4
Z 3-1/2"-1-1/4	3-1/2"	1-1/4	4-7/8	1	5-1/2
Z 3-1/2"-1-1/2	3-1/2"	1-1/2	4-7/8	1	5-1/2
Z 3-1/2"-1-3/4	3-1/2"	1-3/4	4-7/8	1	5-1/2
Z 3-1/2"-2	3-1/2"	2	4-7/8	1	5-1/2
Z 3-1/2"-2-1/4	3-1/2"	2-1/4	4-7/8	1	5-1/2
Z 3-1/2"-2-1/2	3-1/2"	2-1/2	4-7/8	1	5-1/2
Z 3-1/2"-3	3-1/2"	3	4-7/8	1	5-1/2
Z 4"-1-1/2	4"	1-1/2	5-5/8	1	6-1/4
Z 4"-1-3/4	4"	1-3/4	5-5/8	1	6-1/4
Z 4"-2	4"	2	5-5/8	1	6-1/4
Z 4"-2-1/4	4"	2-1/4	5-5/8	1	6-1/4
Z 4"-2-1/2	4"	2-1/2	5-5/8	1	6-1/4
Z 4"-3	4"	3	5-5/8	1	6-1/4

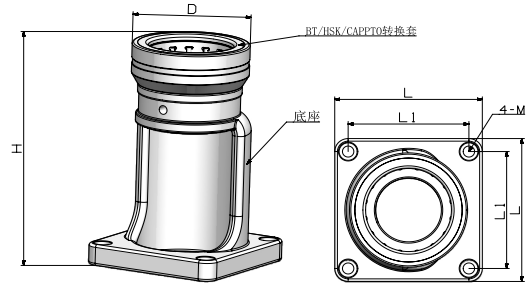
Tool Holder Locking Device

刀柄锁刀座



Size	Dimension (mm)	Wt (kg)
BT30	168*88*110	2.7
BT40	186*90*128	3.3
BT50	280*138*180	8.3
SK30(CAT30)	168*88*110	2.7
SK40(CAT40)	186*90*128	3.3
SK50(CAT50)	280*138*180	8.3

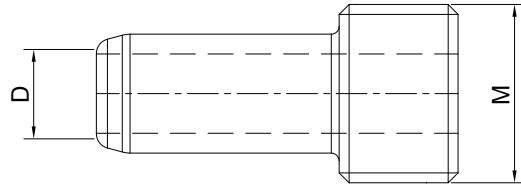
Tool Holder Locking Device (New Type) BT\HSK\CAPPTO 刀柄用 锁刀座



Size	Tool Holder	D	H	L	L1	M
TMS40-32	HSK32, C3	76	168	110	90	M8
TMS40-40	HSK40, C4	76	168	110	90	M8
TMS40-46	BT30	76	168	110	90	M8
TMS40-50	HSK50, SK30, C5	76	168	110	90	M8
TMS40-63	HSK63, BT40, C6	87	172	110	90	M8
TMS40-63.5	CAT40	87	172	110	90	M8
TMS40-63.55	SK40	87	172	110	90	M8
TMS50-80	HSK80, C8	114	219	160	130	M8
TMS50-97.5	SK50	124	219	160	130	M8
TMS50-98.43	CAT50	124	219	160	130	M8
TMS50-100	HSK100, BT50	124	219	160	130	M8

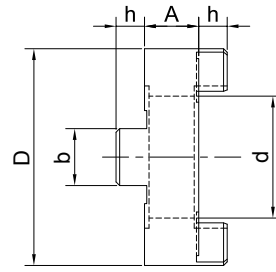
HSK Coolant Tube

HSK 冷却导管



Size	Tool Holder Size	D	M	L
CT32	HSK32	6	M10×1	26
CT40	HSK40	8	M12×1	29.5
CT50	HSK50	10	M16×1	33
CT63	HSK63	12	M18×1	36.5
CT80	HSK80	14	M20×1.5	40
CT100	HSK100	16	M24×1.5	44

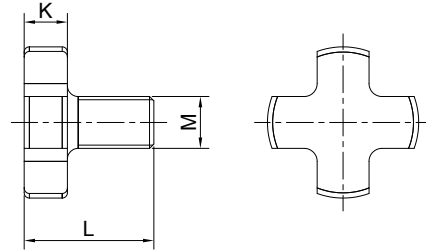
Clutch Drive Ring 驱动环



Size	d	D	A	b	h
CDR16	16	32	10	8	5.0
CDR22	22	40	12	10	5.6
CDR27	27	48	12	12	6.3
CDR32	32	58	14	14	7.0
CDR40	40	70	14	16	8.0

Retaining Screw

十字花压紧螺栓



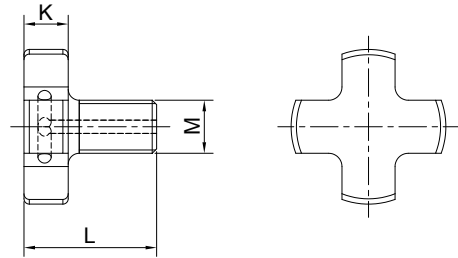
Metric

Size	Tool Holder Size	M	D	K	L
RS16	FMB16	M8x1.25	20	6	16
RS22	FMB22	M10x1.50	28	7	18
RS27	FMB27	M12x1.75	35	8	22
RS32	FMB32	M16x2.00	42	9	26
RS40	FMB40	M20x2.50	52	10	30
RS50	FMB50	M24x3.00	63	12	36
RS60	FMB60	M30x3.50	75	14	45

Inch

Size	Tool Holder Size	M	D	K	L
RS1/2"	FMA1/2"	1/4"-28UNF	0.66	0.34	0.66
RS3/4"	FMA3/4"	3/8"-24UNF	0.88	0.38	0.68
RS1"	FMA1"	1/2"-20UNF	1.19	0.38	0.81
RS1-1/4"	FMA1-1/4"	5/8"-18UNF	1.50	0.50	1.04
RS1-1/2"	FMA1-1/2"	3/4"-16UNF	1.88	0.50	1.02
RS2"	FMA2"	1"-14UNF	2.50	0.50	1.04

'Retaining Screw Coolant 十字花带冷却孔压紧螺栓



Metric

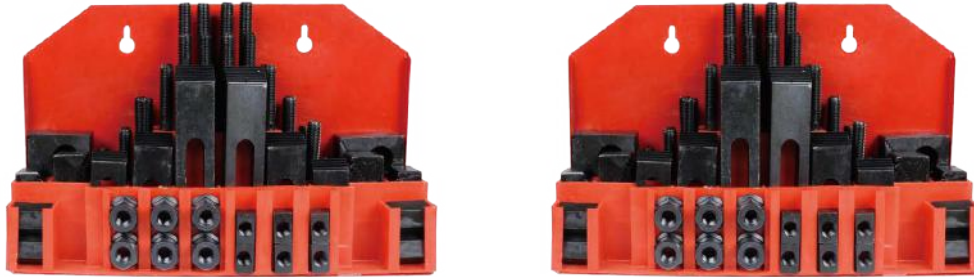
Size	Tool Holder Size	M	D	K	L
RS16	FMB16	M8x1.25	20	6	16
RS22	FMB22	M10x1.50	28	7	18
RS27	FMB27	M12x1.75	35	8	22
RS32	FMB32	M16x2.00	42	9	26
RS40	FMB40	M20x2.50	52	10	30
RS50	FMB50	M24x3.00	63	12	36
RS60	FMB60	M30x3.50	75	14	45

Inch

Size	Tool Holder Size	M	D	K	L
RS1/2"	FMA1/2"	1/4"-28UNF	0.66	0.34	0.66
RS3/4"	FMA3/4"	3/8"-24UNF	0.88	0.38	0.68
RS1"	FMA1"	1/2"-20UNF	1.19	0.38	0.81
RS1-1/4"	FMA1-1/4"	5/8"-18UNF	1.5	0.5	1.04
RS1-1/2"	FMA1-1/2"	3/4"-16UNF	1.88	0.5	1.02
RS2"	FMA2"	1"-14UNF	2.5	0.5	1.04

Clamping Kits 58 PCS

58 件套组合压板



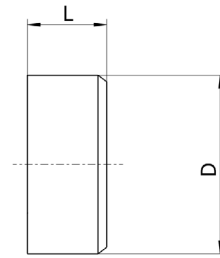
Metric

Size	Wt (kg)	Packing (cm)
M8*10-58 pcs	6.5kg	33*11*20
M10*12-58 pcs	7kg	33*11*20
M12*14-58 pcs	9.5kg	37*11*22
M12*16-58 pcs	10kg	37*11*22
M14*16-58 pcs	12kg	39*11*22
M14*18-58 pcs	12.5kg	39*11*22
M16*18-58 pcs	16kg	49*13*23
M16*20-58 pcs	16.5kg	49*13*23
M18*20-58 pcs	23kg	38*16*29
M20*22-58 pcs	25kg	38*16*29
M22*26-58 pcs	40kg	47*25*29

Inch

Size	Wt (kg)	Packing (cm)
5/16"-18*3/8"	6kg	33*11*20
3/8"-16*7/16"	7kg	33*11*20
3/8"-16*1/2"	7kg	33*11*20
3/8"-16*9/16"	7kg	33*11*20
1/2"-13-9/16"	10kg	37*11*22
1/2"-13-5/8"	10kg	37*11*22
1/2"-13-11/16"	10kg	37*11*22
5/8"-11-11/16"	16kg	39*13*23
5/8"-11-3/4"	16kg	39*13*23
5/8"-11-13/16"	16kg	39*13*23
3/4"-10*7/8"	24kg	38*16*29

Balluff Data Carrier 巴鲁夫数据芯片



Size	D	L	Memory Type	User Data, Read/Write
BIS M-122-02/A	10	4.5	FRAM	2000 Byte
BIS C-122-04/L	10	4.5	EEPROM	511 Byte

Tool Holder Trolley 刀具车



Size	Cabinet Size	Packing Size	Wt (kg)
BT30-36	920 x 475 x 775 mm	700 x 490 x 330 mm	30
BT40-36	920 x 475 x 775 mm	700 x 490 x 330 mm	31
BT50-24	920 x 475 x 775 mm	700 x 490 x 330 mm	32
HSK63-24	920 x 475 x 775 mm	700 x 490 x 330 mm	31

Tool Holder Stand
刀架 (刀柄座)



Size	Cabinet Size	Packing Size	Wt (kg)
BT30-TS12	495 x 240 x 150 mm	525 x 270 x 180 mm	3.4
BT40-TS12	495 x 240 x 150 mm	525 x 270 x 180 mm	3.5
BT50-TS8	495 x 240 x 150 mm	525 x 270 x 180 mm	3.6
HSK63-TS8	495 x 240 x 150 mm	525 x 270 x 180 mm	3.5

Tool Holder Cabinet 刀具柜



Size	Cabinet Size	Packing Size	Wt (kg)
BT40-TE54	650 x 405 x 1545 mm	680 x 435 x 1575 mm	53
BT40-TE54	650 x 405 x 1545 mm	680 x 435 x 1575 mm	54
BT50-TE36	650 x 405 x 1545 mm	680 x 435 x 1575 mm	55
HSK63-TE36	650 x 405 x 1545 mm	680 x 435 x 1575 mm	54

**Tool Holder Trolley
(带抽屉) 刀具车**



Size	Cabinet Size	Packing Size	Wt (kg)
BT30-TH54	600 x 600 x 915 mm	630 x 630 x 945 mm	63
BT40-TH54	600 x 600 x 915 mm	630 x 630 x 945 mm	64
BT50-TH36	600 x 600 x 915 mm	630 x 630 x 945 mm	65
HSK63-TH36	600 x 600 x 915 mm	630 x 630 x 945 mm	64

Tool Holder Trolley (带抽屉) 刀具车



Size	Cabinet Size	Packing Size	Wt (kg)
BT30-TL24	600 x 600 x 915 mm	630 x 630 x 945 mm	52
BT40-TL24	600 x 600 x 915 mm	630 x 630 x 945 mm	53
BT50-TL16	600 x 600 x 915 mm	630 x 630 x 945 mm	54
HSK63-TL16	600 x 600 x 915 mm	630 x 630 x 945 mm	53

**Tool Holder Trolley
(带抽屉) 刀具车**



Size	Cabinet Size	Packing Size	Wt (kg)
BT30-TD54	600 x 600 x 1015 mm	630 x 630 x 1045 mm	72
BT40-TD54	600 x 600 x 1015 mm	630 x 630 x 1045 mm	73
BT50-TD36	600 x 600 x 1015 mm	630 x 630 x 1045 mm	74
HSK63-TD36	600 x 600 x 1015 mm	630 x 630 x 1045 mm	73